

# Instruction of ABK-902 Uninterrupted power supply

## I、 Basic instruction

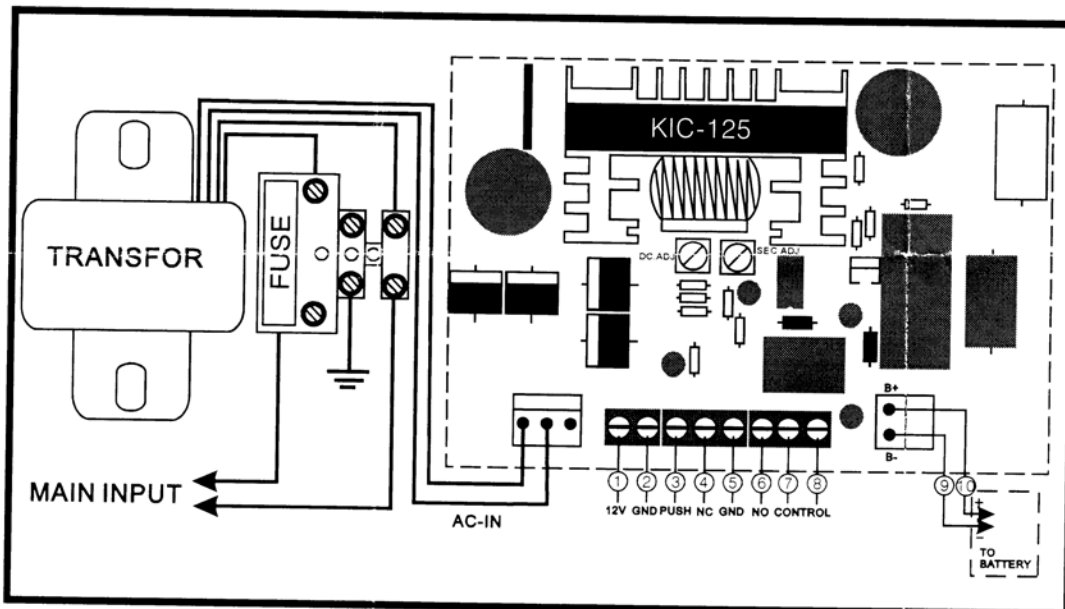
The power supply choose original high grade component and was produced assembly .Professional design and guarantee quality.

## II、 Features

- 1、 Output Voltage 3V-15V(13.5V leave faatory) widly used in attendance and access control.
- 2、 Time delay and output of NO/NC/COM contact.
- 3、 Output current  $\geq 3A$ .
- 4、 It can protect short circuit artomatically.
- 5、 Dimension, 223Lx213Wx80H(mm).

Net weight:3.2kgs

## III、 The planar map of power supply



(1)、 Instruction of output end point contact (as the picture).

1-2:Output Voltage 12DCV ,maximal current 3A。 1 for anode ,2 for negative .

2-3:Input end of button suitable for access control or time attendance.

4-5:NC and COM end output 12VDC at natural time .2-3end uncolcked voltage after contacting ,0-30 secretary ,4 for anode 5 for negative

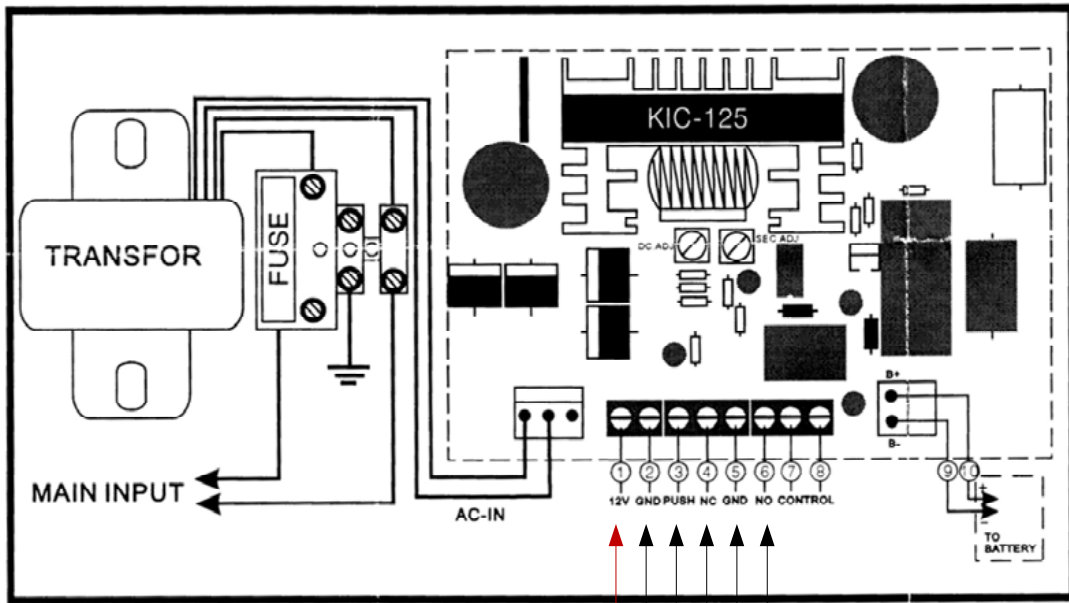
5-6:NO and COM havent. current at natural time 2-3 end locked voltage after conacting (0-30)set output voltage 12VDC 5 for negative 6 for anode

7-8:Button Controlied Touch off the Voltage as 12V

9-10:To battery 10 for anode 9 for negative

IV、 Timer: 0-30 second setting the proper time of , adjust secretary Addition

Note:This power supply can not be fitted in the occasion of dampness plammability explosive



- 12v dc output
- 0v output & also one side of exit button
- Other side of exit button
- +12v side of fail safe locking device (power to lock)
- 0v side of locking device
- +12v side of fail secure locking device (power to un-lock)