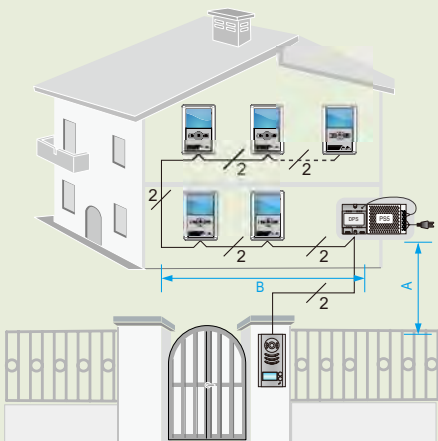


# Villa application

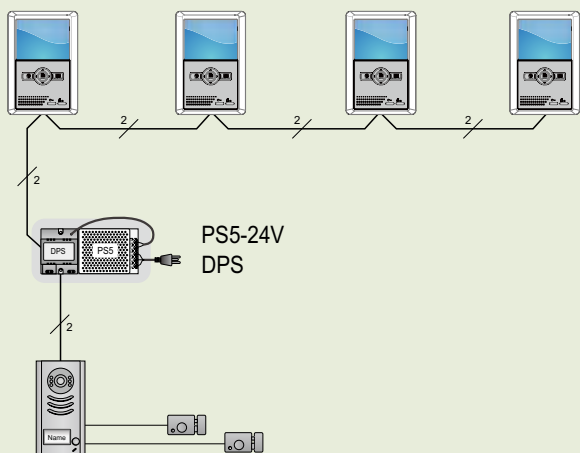


## Cable and Distance

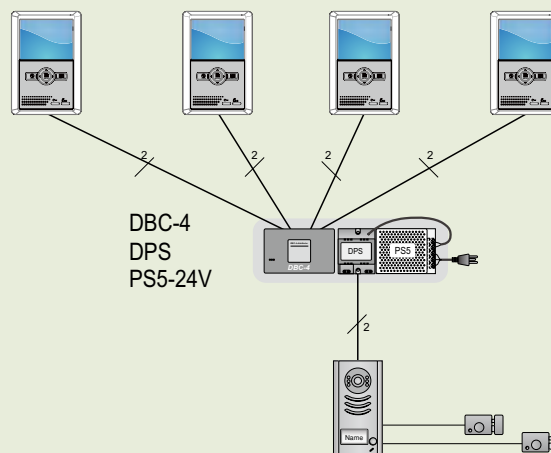
Cable	A(m)	B(m) ≤2 VT25	B(m) ≤16 VT25
CAT5 Cable (Combined)	40	80	—
Pair Cable (Parallel) 2X0.75 mm <sup>2</sup>	30	50	—
Twisted Cable 2X0.75 mm <sup>2</sup>	60	100	40
Twisted Cable 2X1.0 mm <sup>2</sup>	80	120	60

## Extending Monitors(up to 16)

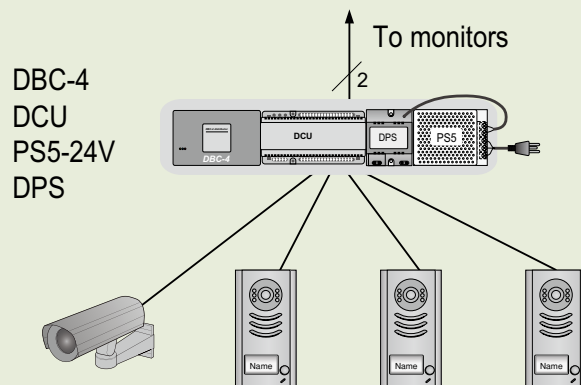
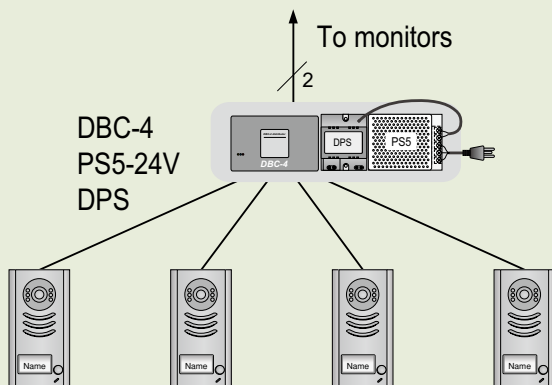
In-Out topology:



Star topology:



## Extending Door/CCTV Cameras



# 2 -Wire Intercom System

## 596SÚ User Manual



## **Programming the 596KP keypad Basic set up configuration**

The manual for the 596KP is quite in-depth so please refer to the basic set-up as written below but also please read the manual carefully

Both door panel and video monitor have DIP switches to the rear of them which are used for different configurations, mainly they are used if you have multi door panel installations. If you have the basic system of 1 x door panel and 1 x video monitor then you do not need to worry about the DIP switches at all, they should all be set to the OFF position

To program the 596KP keypad for basic set up configuration in less than two minutes you will need to enter the program mode by entering the master default code

The default master code is 1234, so you would press 1234# (1 x hash)  
The Red LED will light up to confirm you are now in the programming mode

If you do not press any button for up to 60 seconds the keypad will exit from the programming mode

To manually exit from the programming mode press the \* key (1 x star)

### **To program a user code only – example code 9009**

Enter the programming mode by pressing the master code of 1234# (1 x hash)  
Press 21# – this is user code position 1  
Press 9009# – this is your new user code, if successful the keypad will bleep twice  
Press \* to exit (1 x star)  
Press the user code 9009# to test and the Red LED will light to confirm relay one is activated

### **To program the lock release timer**

Enter the programming mode by pressing the master code of 1234# (1 x hash)  
Press 03# then 09# for 9 seconds  
Press \* to exit (1 x star)  
Enter 9009# and the keypad Red LED will light up for 9 seconds

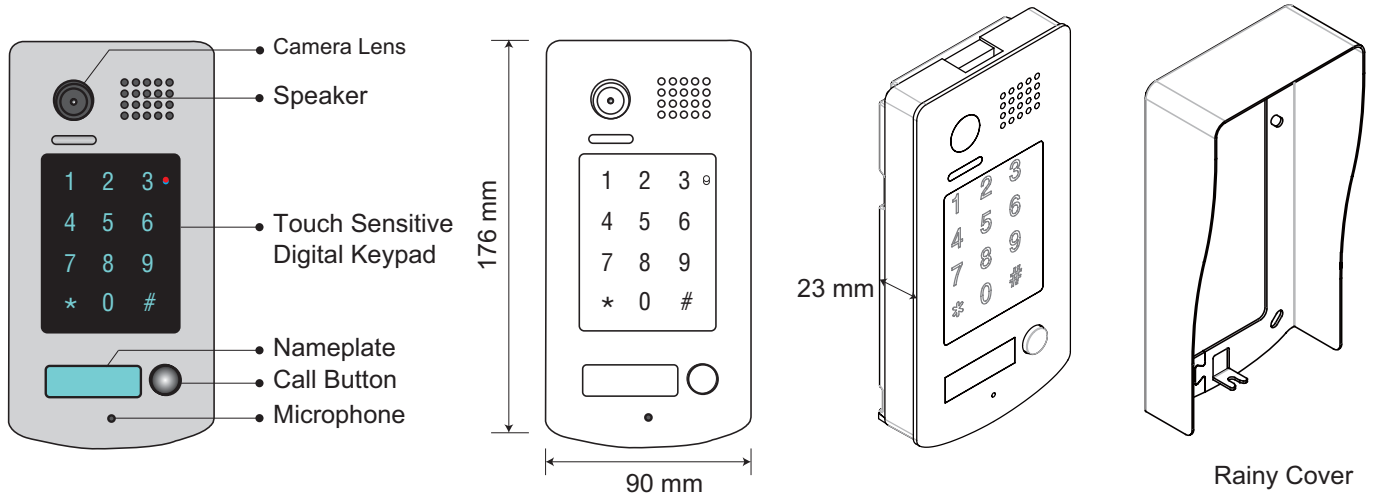
### **To change the master default code of 1234 to 5678 (or your chosen number)**

Enter the programming mode by pressing 1234# (1 x hash)  
Press 01#  
Press 5678# – this is your new master code, if successful the keypad will bleep  
Press \* to exit (1 x star)

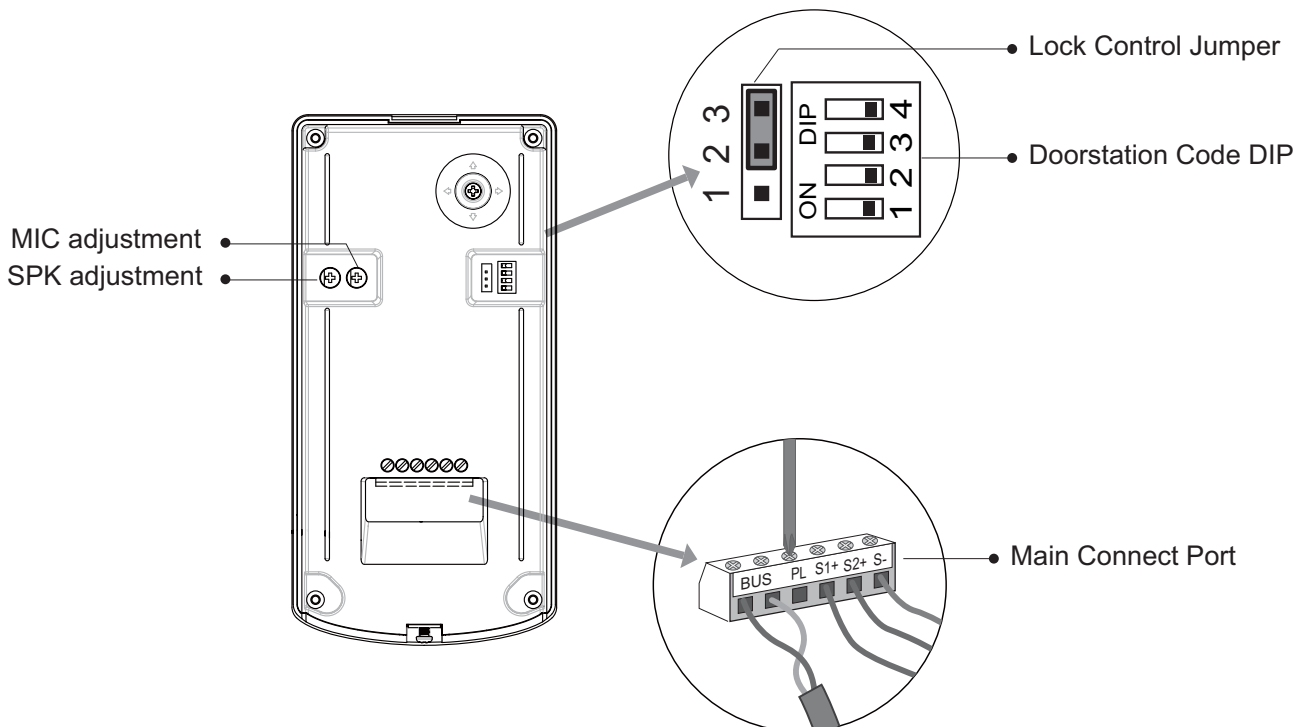
### **Important:**

do NOT forget your new mater code as you cannot reset the keypad without the master code

# 1. Parts and Functions

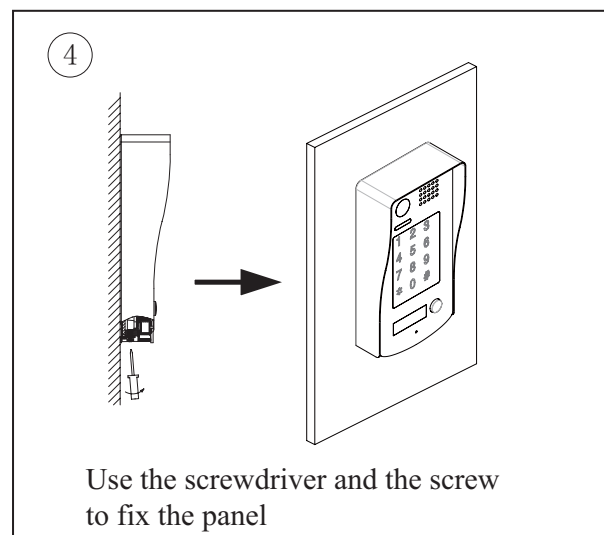
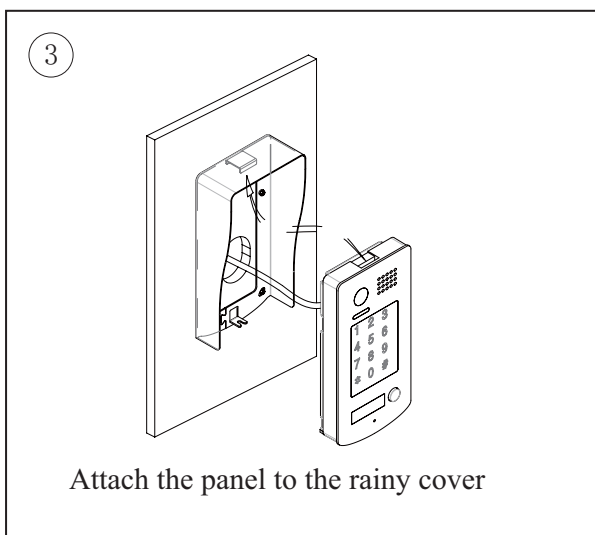
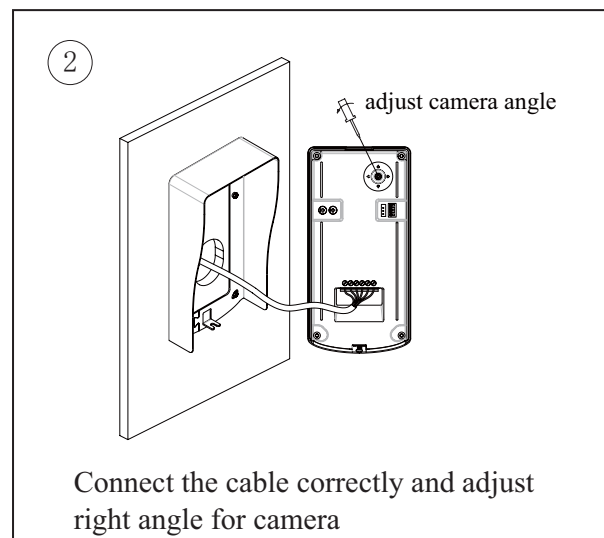
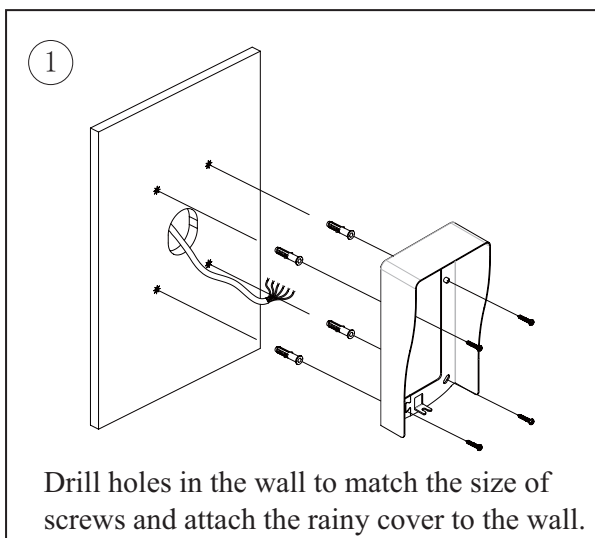


# 2. Terminal Descriptions



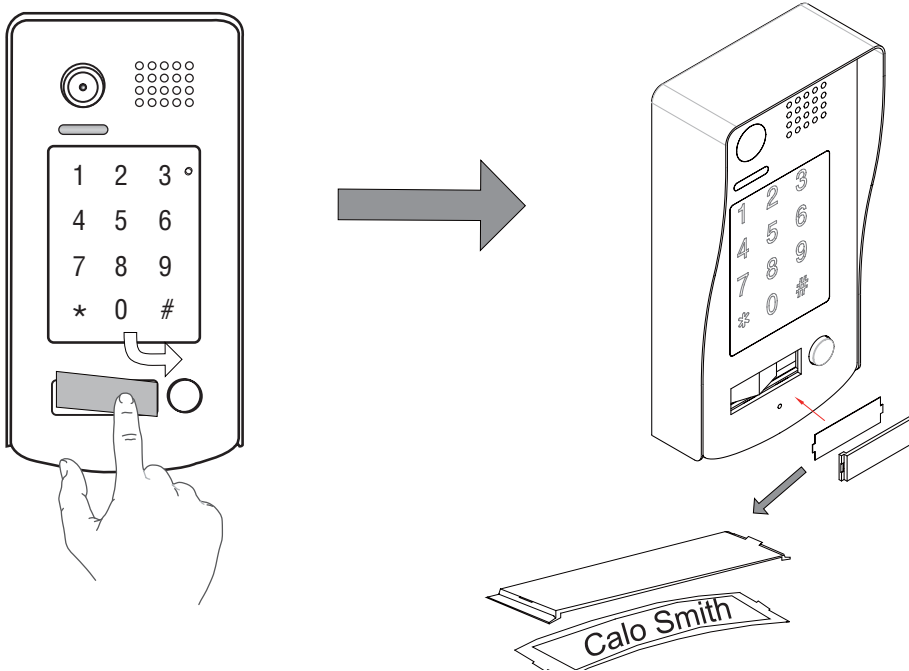
- **Lock Control Jumper:** To select the lock type: see section 5
- **Doorstation Code DIP:** Total 4 door stations can be supported, see section 6
- **MIC:** Adjust the volume of Microphone
- **SPK:** Adjust the volume of Speaker
- **Main Connect Port:** To connect the bus line and the electronic locks.
- **BUS:** Connect to the bus line, no polarity.
- **PL:** External lock power input, connect to the power positive(power +).
- **S1+, S2+:** Lock power(+) output, to connect 2 locks.
- **S-:** Lock power(-) output, connect to the power(-) input of locks(only when using the camera to power the locks, if using the external power supply for the locks, the S- will not be connected).

## 4. Door Station Mounting

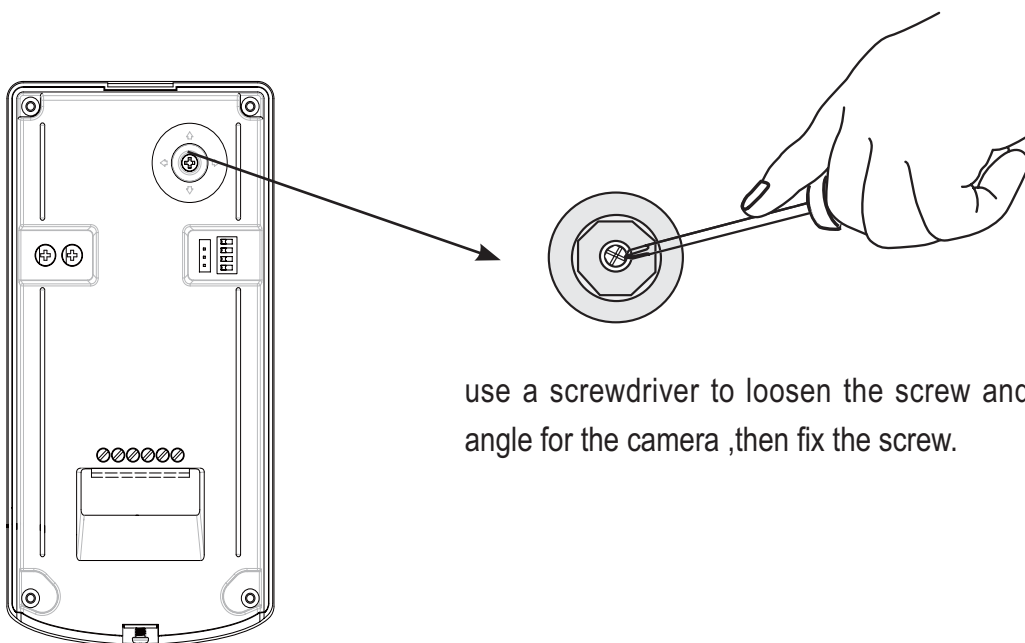


## Placing Name Label

Move the plastic cover away to open the transparent name label cover, insert a name paper, then put the plastic cover back to the panel.



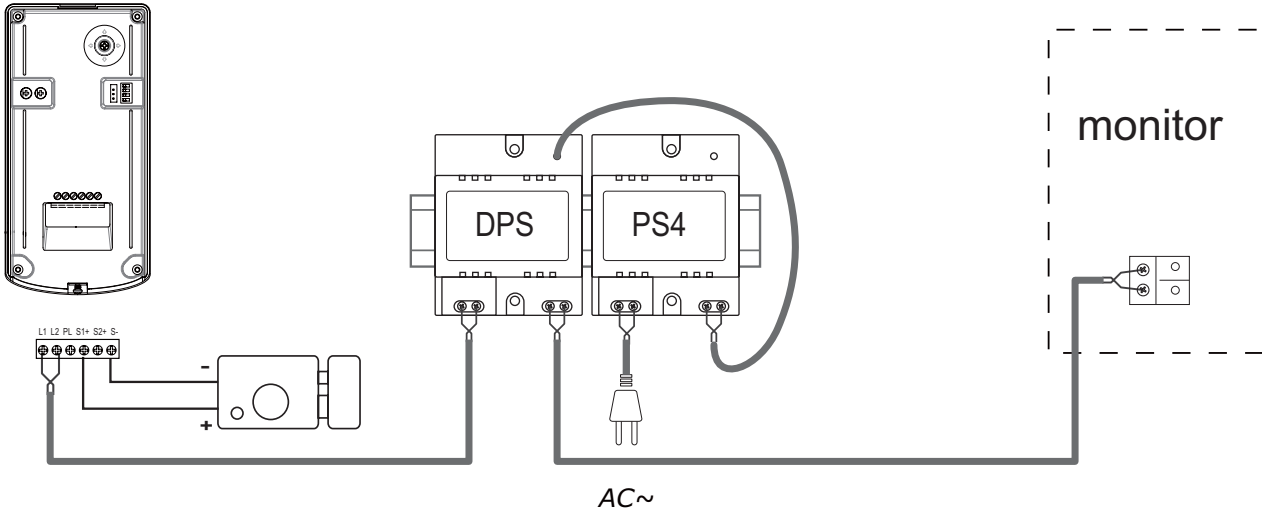
## Adjusting Camera Angle



use a screwdriver to loosen the screw and adjust the angle for the camera ,then fix the screw.

# 5. System Wiring and Connections

## Basic Connection



## Electric Lock Connection

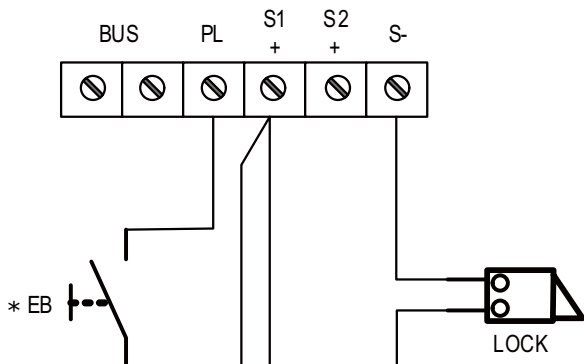
### Door Lock Controlled with Internal Power

Note: Doentryonline Ltd recommend an additional power supply for any lock release used

1. Electronic lock of Power-on-to-unlock type should be used.
2. The door lock is limited to 12V, and holding current must be less than 250mA.
3. The door lock control is not timed from Exit Button(EB).
4. The **Unlock Mode** Parameter of Monitor must be set to 0 (by default).

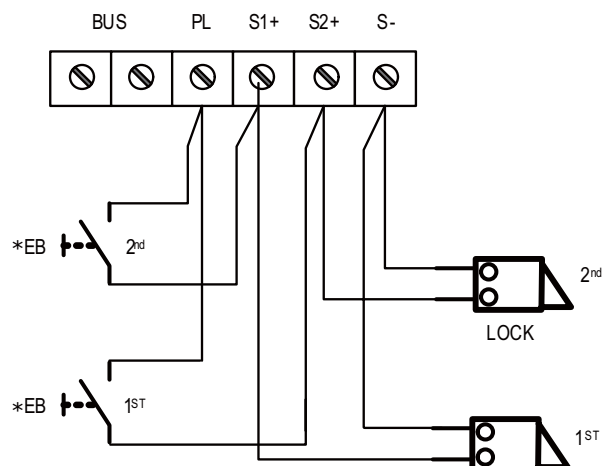
1 2 3  
 Connect one lock

Jumper position in 2-3

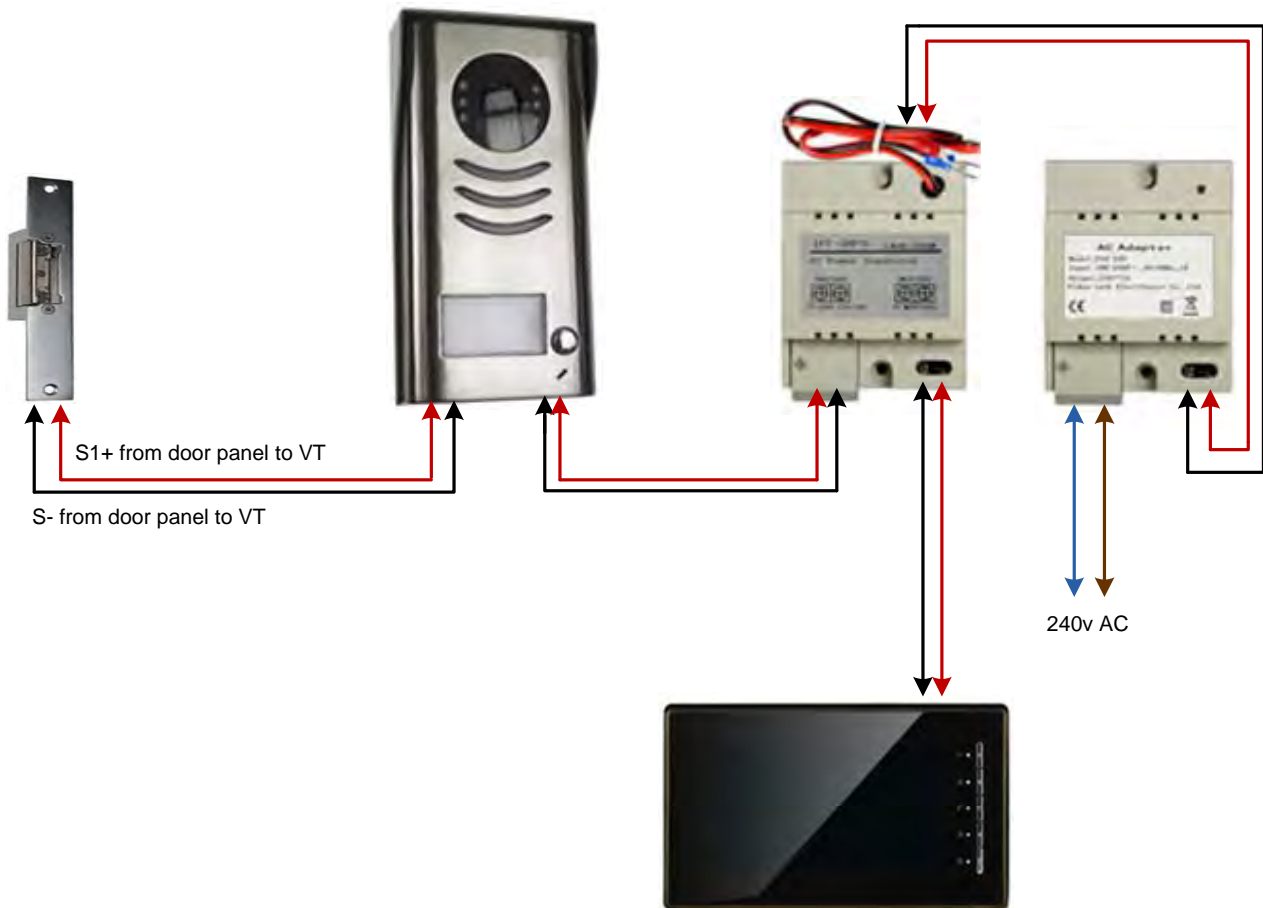


1 2 3  
 Connect two locks

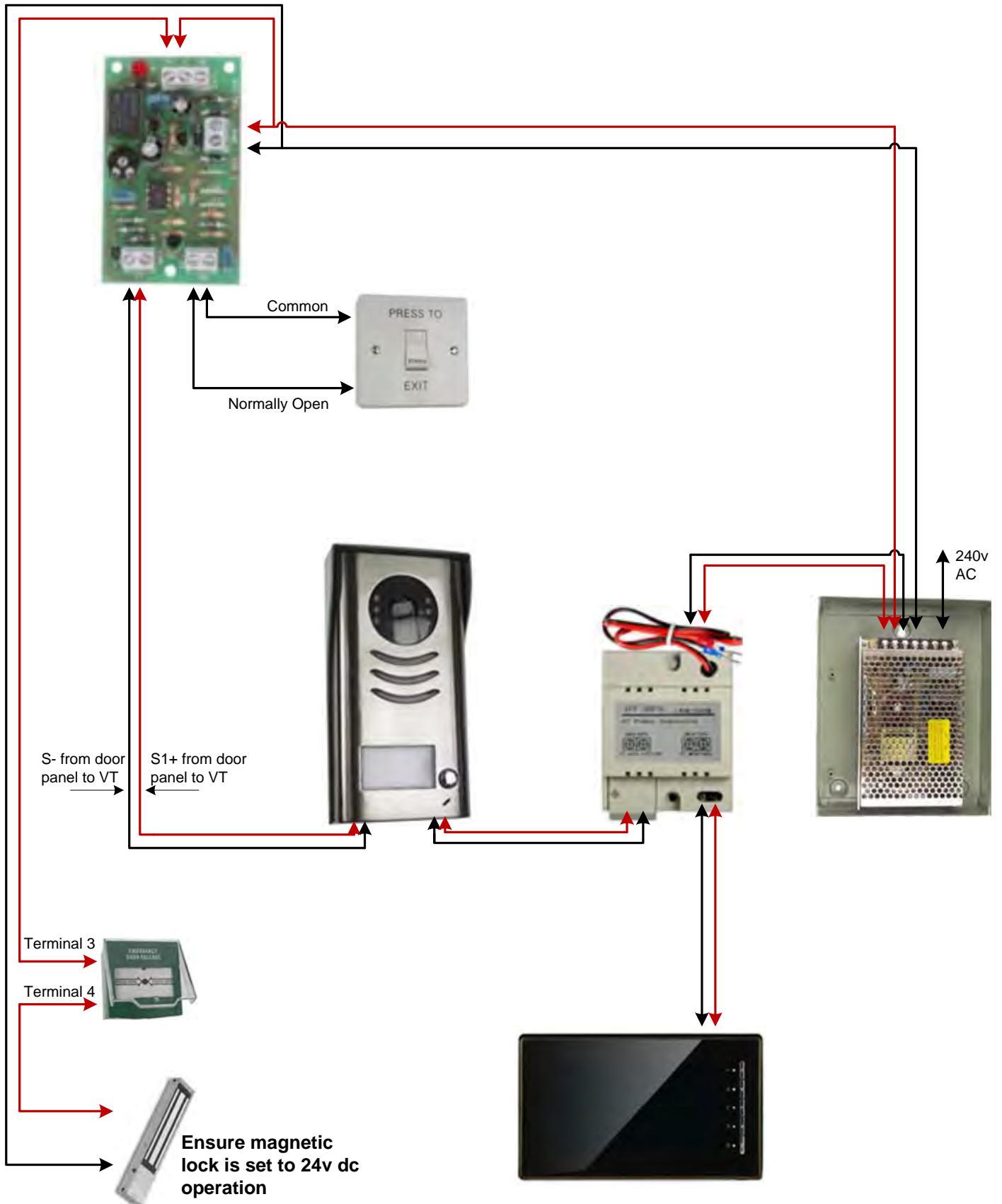
Jumper position in 2-3



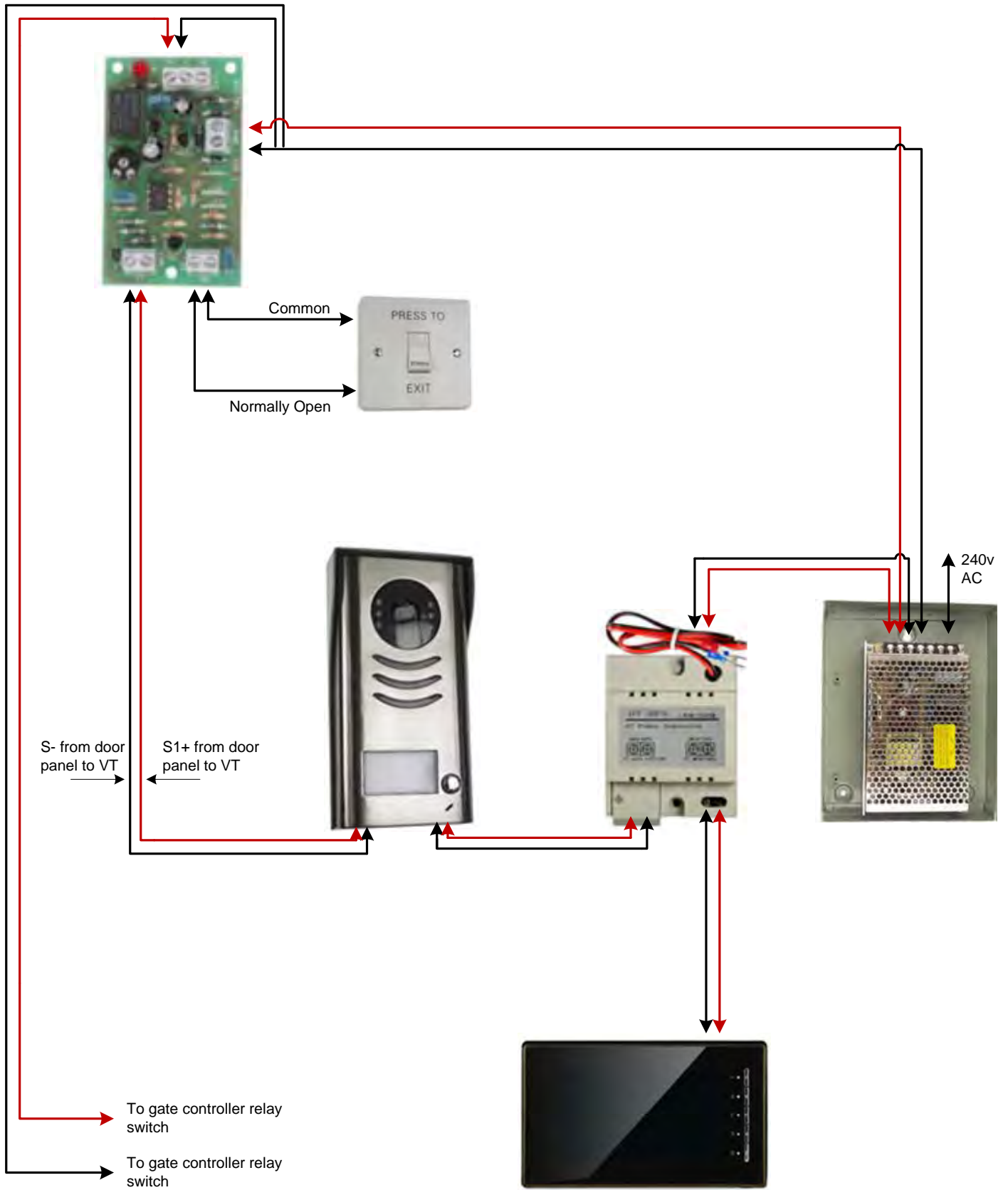
## Connecting to a standard lock release



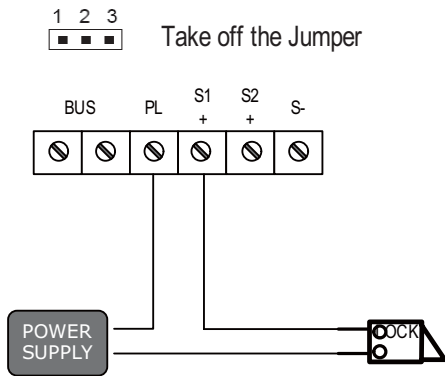
# Connecting to a magnetic lock



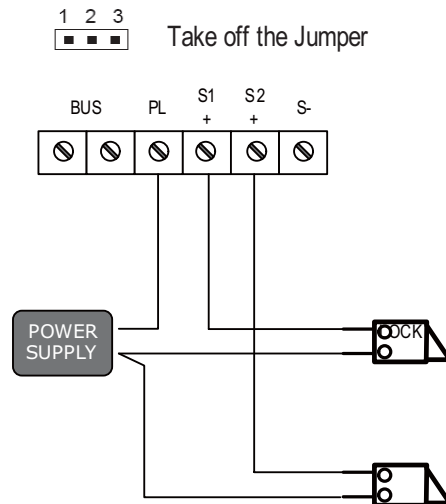
# Connecting to an automated gate



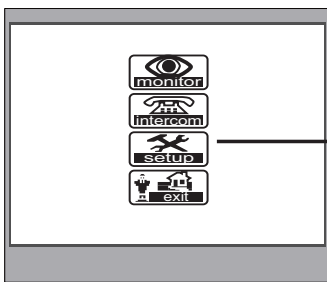
### connect one lock



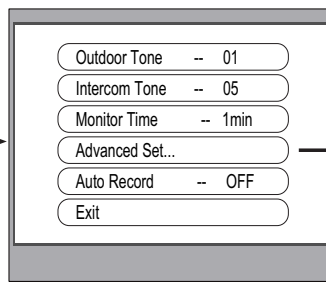
### connect two locks



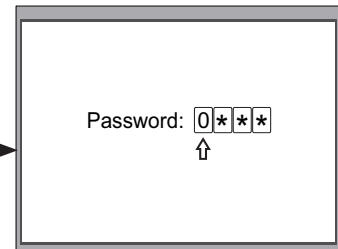
## Unlock parameter setting(set in monitor)



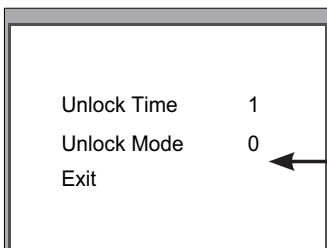
1. Press setup item on main menu page.



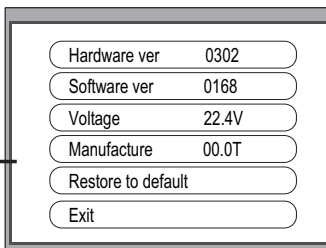
2. Select Advanced Set...item a password will be asked.



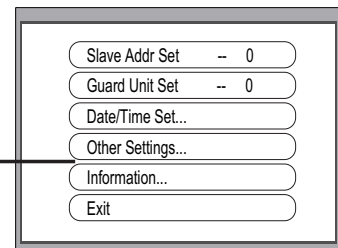
3. The default password is 2008.



6. Setting unlock mode to 0 or 1



5. Press UNLOCK button and hold for 2s.

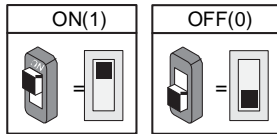


4. Select Information...item

### Note:




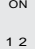
1. must connect VT596 correctly before setting.
2. the parameter will be saved in VT596 automatically, so you need only set on one monitor.

## 6.Setup



### 6.1 DIP Switches Settings of Doorstation



Total 2 bits on the DIP switches can be configured. The switches can be modified either before or after installation.

Bit state		Descriptions
		Default setting, ID = 0(00), set to the first Door Station.
		ID = 1(10), set to the second Door Station.
		ID = 2(01), set to the third Door Station.
		ID = 3(11), set to the fourth Door Station.

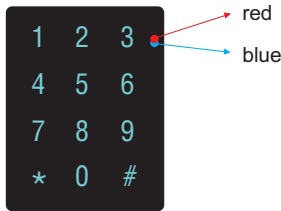
### 6.2 DIP Switches Settings of Monitor

There are 6 bit switches in total. The DIP switches are used to configure the User Code for each Monitor.

Bit-6 is line terminal switch, which have to be set to ON if the Monitor is in the end of the line(bus), otherwise set to OFF.

Bit state	Setting	Bit state	Setting
	The monitor not at the end of the bus.		The monitor is at the end of the bus.

Order	Setting items	Setting range	Default value	Setting code
1	Reset all settings	1,2,3,4	-	00
2	Setting the master code	1 ~ 12 digits Valid keys:0 ~ 9	1,2,3,4	01
3	Setting the key illumination time	10 to 99 seconds/ continually lit	10 seconds	02
4	Setting the unlock time	01 to 99 seconds	1 seconds	03
5	Setting the unlock mode	0:opened/1:closed	opened	04
6	Operation tone settings	0:on/1:off	on	05
7	Reset code settings	1,2,3,4	-	06
8	*&# function settings	0:Normal/1:Reverse	Normal	07
9	Call tone settings	0:Enable/1:Disable	Enable	08
10	Interference resistant grade settings	Valid keys:0 ~ 5	2	09
11	Reserve(not used)	Reserve	Reserve	10~17
12	Setting the code forTemporary1	1 ~ 12 digits Valid keys:0~9	-	18
13	Setting the code forTemporary2	1 ~ 12 digits Valid keys:0~9	-	19
14	Setting the code for user group1	1 ~ 12 digits Number of codes:40 Valid keys:0~9	-	20~59
15	Setting the code for user group2	1 ~ 12 digits Number of codes:40 Valid keys:0~9	-	60~99



Each operation is indicated by the lighting up of the LED indicators on the right section of the unit, and by the sounding of the buzzer.

Input the master code.  
(Default: [ 1 2 3 4 ] +[#])

(red) ON (blue) OFF  
● ○ Beep+, Beep

**1.Reset all settings      2.Setting the master code (Default : 1234)      3.Setting the key illumination time (Default : 10s)      4. Setting the unlock time (Default : 1s)**

<p>Input the setting code. <b>00+#</b></p> <p>(red) ON (blue) ON ● ● Beep+, Beep</p>	<p>Input the setting code. <b>01+#</b></p> <p>(red) ON (blue) ON ● ● Beep+, Beep</p>	<p>Input the setting code. <b>02+#</b></p> <p>(red) ON (blue) ON ● ● Beep+, Beep</p>	<p>Input the setting code. <b>03+#</b></p> <p>(red) ON (blue) ON ● ● Beep+, Beep</p>
--	--	--	--

<p>Inputting of code <b>1234+#</b></p> <p>(red) ON (blue) OFF ● ○ Beep+</p>	<p>Inputting of new master code (ex.: 4321)(1~12 digits) <b>4321+#</b></p> <p>(red) ON (blue) OFF ● ○ Beep+</p>	<p>Inputting of code (ex.: 10) range:00 or 10~99 <b>10+#</b></p> <p>(red) ON (blue) OFF ● ○ Beep+</p>	<p>Inputting of code (ex.: 09) range:01~99 <b>09+#</b></p> <p>(red) ON (blue) OFF ● ○ Beep+</p>
---	---	---	---

- When the “ \* cancel” key is pressed, the LED lights off, the buzzer beeps, and the system exits the setting mode

- When there isn't any operation in 10s, the LED lights off, the buzzer beeps, and the system exits the setting mode

(red) OFF (blue) OFF  
○ ○ Beep, Beep+

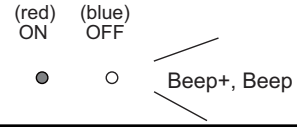
- All settings will restore to their default value.  
- When power on or activate the reset all setting item, the keypad checking will carry out, during this time, the key illumination will blink and the touching operation is forbidden, after finish checking, the key illumination will stop blinking and sent out a long sound of beep

- The master code is allowed 1~12 digits, the same code cannot be set for both the user code and the master code, it is recommended that you modify the default master code.

- If the key illumination time is set to 00, the key illumination will light up all the time when power on.  
- If the key illumination time is set to 10~99, the key illumination will light up for 10~99 seconds. At this mode, the key illumination lights off in standby mode, touching any digital key can illuminate, but this is the invalid digital.

- The unlock time can be set on both monitor and door station, and the valid value is the number you set last time.

Input the master code.  
(Default: [ 1 2 3 4 ] +[#])

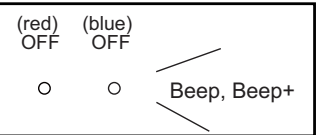


**5. Setting the unlock mode (Default : 0(opened))    6. Setting operation tone (Default : ON)    7. Reset code setting    8. \*&# function setting (Default : Normal)**

<p>Input the setting code. <b>04+#</b></p>	<p>Input the setting code. <b>05+#</b></p>	<p>Input the setting code. <b>06+#</b></p>	<p>Input the setting code. <b>07+#</b></p>
--	--	--	--

<p>0/1 Inputting of code (ex.: 1) range:0:(open)/1:(close) <b>1+#</b></p>	<p>0/1 Inputting of code (ex.: 1) range:0:(on)/1:(off) <b>1+#</b></p>	<p>Inputting of code <b>1234+#</b></p>	<p>0/1 Inputting of code (ex.: 1) range:0:(normal)/1:(reverse) <b>1+#</b></p>
---	---	--	---

- When the “ \* cancel” key is pressed, the LED lights off, the buzzer beeps, and the system exits the setting mode  
- When there isn't any operation in 10s, the LED lights off, the buzzer beeps, and the system exits the setting mode



- The unlock mode can be set on both monitor and door station, and the valid value is the number you set last time.
- When the operation tone is set to 0, pressing the digital keypad will sent out a sound of beep.
- When the operation tone is set to 1, pressing the digital keypad will blink one time.
- Cancel all the passwords except the master code.
- Restore the master code to default value(1,2,3,4)
- When the item is set to 0, press the \* button to cancel the input, and press the # button to confirm the input.
- When the item is set to 1, press the # button to cancel the input, and press the \* button to confirm the input .

Input the master code.  
(Default: [ 1 2 3 4 ] +[#])

**9. Call tone setting (Default : enable)**      **10. Interference resistant grade setting (Default : 2)**

Input the setting code.  
**08+#**

Input the setting code.  
**09+#**

0/1  
Inputting of code (ex.: 1)  
range:0(enable)/1:(disable)  
**1+#**

Inputting of code (ex.: 3)  
range:0~5  
**3+#**

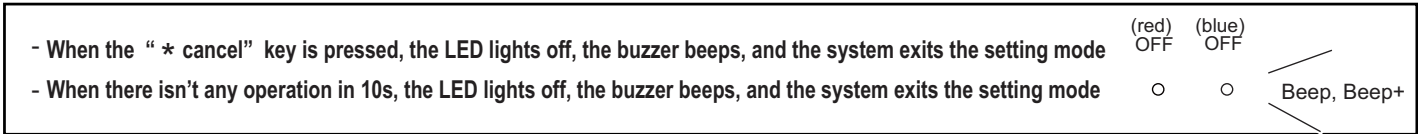
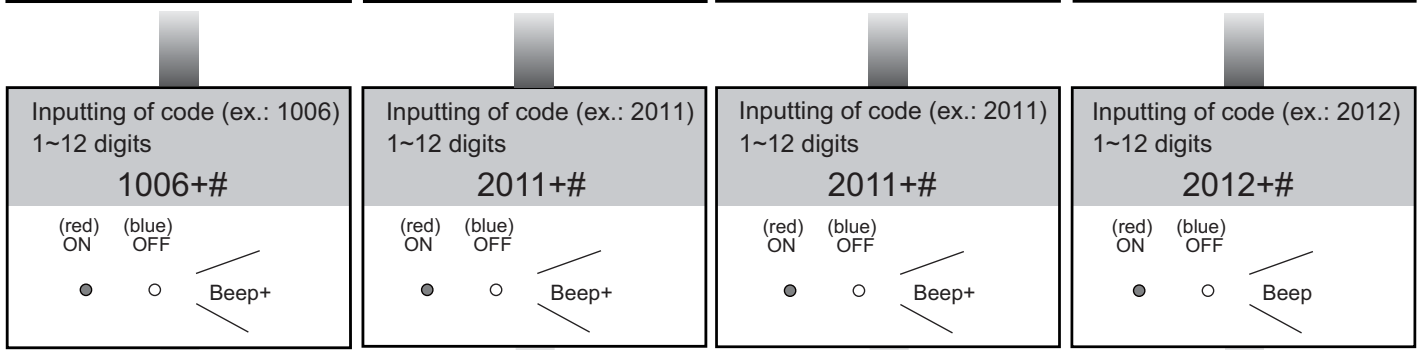
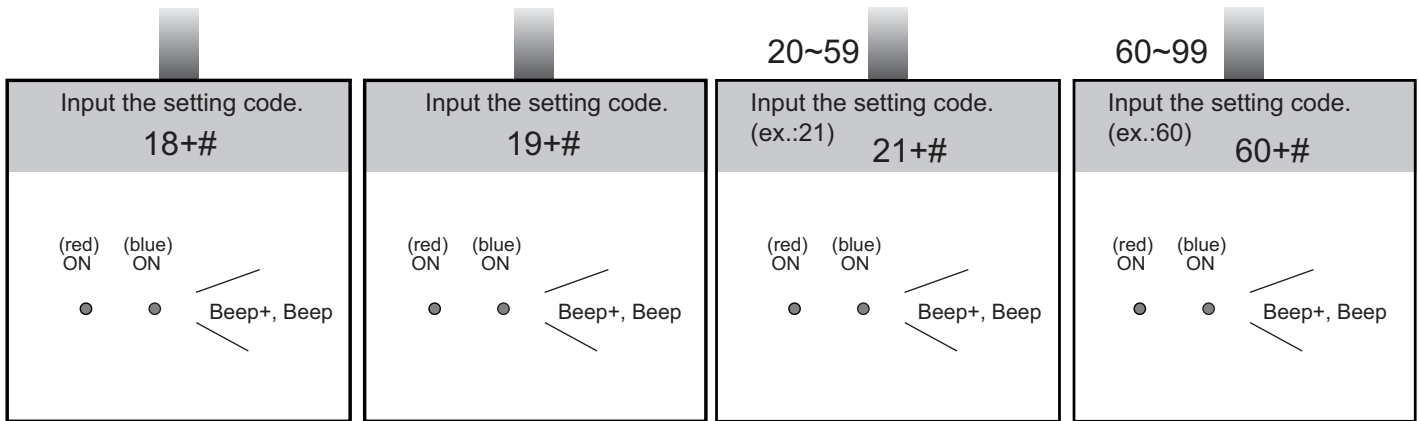
- When the “ \* cancel” key is pressed, the LED lights off, the buzzer beeps, and the system exits the setting mode  
- When there isn't any operation in 10s, the LED lights off, the buzzer beeps, and the system exits the setting mode

- If the item is set to 0, the unit will respond a call tone when pressing the “CALL” button.
- If the item is set to 1, the unit will have no responds when pressing the “CALL” button.

- The larger you set the interference resistant grade, the stronger it will be, but the sensitivity of the keypad will be more lower.
- The interference resistant grade setting also will activate the keypad checking.



**12. Setting the code for Temporary1**      **13. Setting the code for Temporary2**      **14. Setting the code for user group1**      **15. Setting the code for user group2**



- When input the correct temporary password to release the door, the system will clear the temporary password after 60 seconds automatically. But you should know that the password is valid within 60 seconds after inputting the correct temporary password
- The temporary1 is used to release the first lock, and the temporary 2 is used to release the second lock.
- If the password length exceeds 12 digits, the system will send out the sound of “beep,beep,beep,beep”, and the digitals you input before will be cleared at the same time.
- The temporary code can not be set the same as the master code and user code.

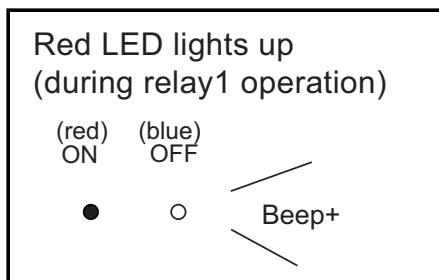
- The user code group1 is used to release the first lock, and the user code group2 is used to release the second lock.
- The user code group1 and user code code group2 can contain 40 group passwords
- If the password length exceeds 12 digits, the system will send out the sound of “beep,beep,beep,beep”, and the digitals you input before will be cleared at the same time.
- The user code can not be set the same as the master code and temporary code.

## 8.Unlock Operations

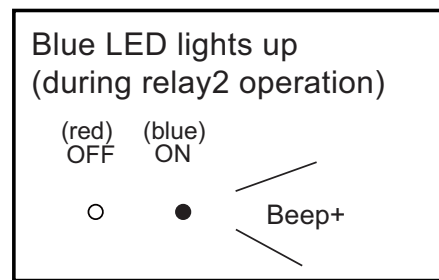
### Unlocking of user code

When the registered user code has been input using the keypad (1~12 digits), the LED indicator (group 1: red, group 2: blue) lights up, the buzzer sounds,and the electric door strike is unlocked.

Example:group 1  
2011



Example:group 2  
2012



- The time interval during which the button must be pressed is approximately 10 seconds. If the time interval exceeds approximately 10 seconds, the input value will be cleared.
- If you make a mistake when inputting the user code,press the" cancel" button and input the user code again.
- When the "Lockout" function has been activated, the release function is forbidden and the input operation is disabled for 60 seconds if 10 times incorrect access codes are continuously attempted. ( "Lockout" function:When "Lockout" is activated,the relay 2 doesn't respond the second lock but responds the LOCKOUT function.After continuously inputting incorrect access code 10 times,LOCKOUT output and the relay 2 will be closed for 60 seconds,the LED-relay 2 will be illuminated for 60 seconds) During this time,the buzzer will continuously sound about 8 times.
- You can activate the electric door strike by pressing the request to exit button connected to the unit. Pressing request to exit button 1 releases relay 1, and pressing request to exit button 2 releases relay 2.(The unlock function will work when the request to exit button is pushed, even while the "Lockout" function is operating.)



1. During calling,pressing "cancel" button can cancel the calling
2. If input the incorrect access code,the buzzer will sound of beep,beep,beep

## 9. Power Supply Instructions

Name	Description	Usage
<b>PS5-24V</b>	Power supply,85~260Vac input,24Vdc/3A output,10 DIN modules	Connect with multi doorstations or multi monitors(up to 2 or above)
<b>PS4-24V</b>	Power supply,85~260Vac input,24Vdc/1A output,for basic kit only,4 DIN modules	Connect with one doorstation and one monitor(DT16 can be connected two)

## 10. Precautions

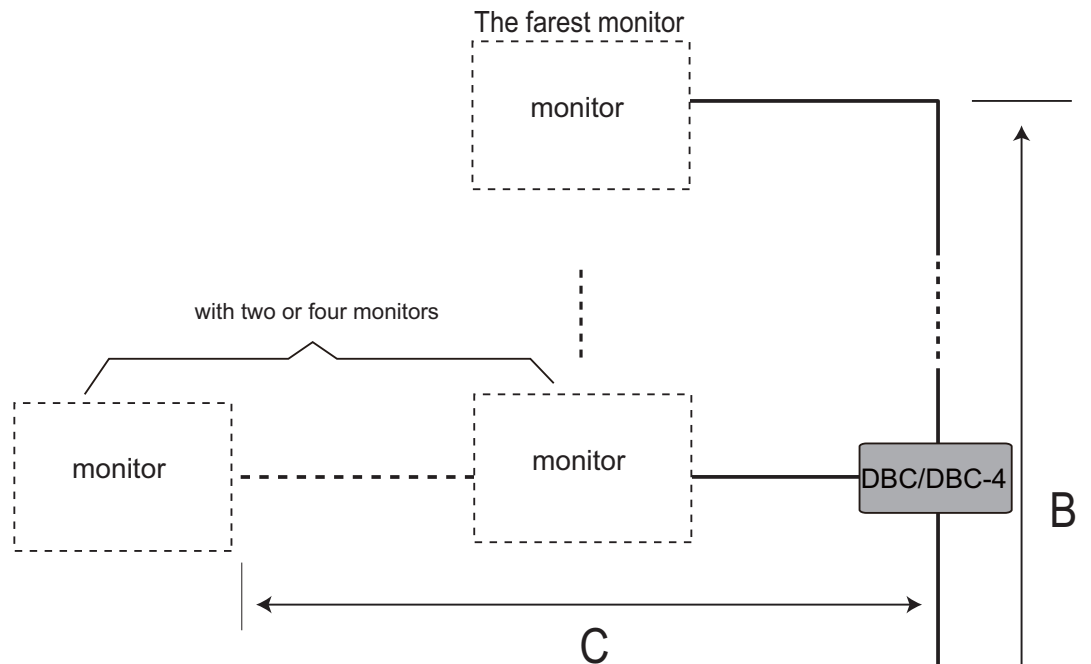
- Please clean the unit with soft cotton cloth, don't use the organic impregnant or chemical clean agent. If necessary, please use a little pure water or dilute soap water to clean the dust.
- The unit is weather resistant. However do not spray high pressure water on access control keypad directly. Excessive moisture may cause problems with the unit.
- You must use the right adaptor which is supplied by the manufacture or approved by the manufacture..
- Pay attention to the high voltage inside the products, please refer service only to a trained and qualified professional.

## 11. Specifications

- Lock Power supply: 12Vdc, 300mA(Internal Power)
- Power Consumption: 2W in standby, 8W in working
- NO, COM dry contact: Max. 48V dc 1.5A
- Camera angle: Max. 72°
- Number of relay circuits: 2
- Mounting: Surface mounting
- Dimension: 176(H)X90(L)X23(D)mm
- Working temperature: -10°C ~ 45°C

## 12.Cables Requirements

The maximum distance of the wiring is limited in the VT system. Using different cables may also affect the maximum distance which the system can reach.



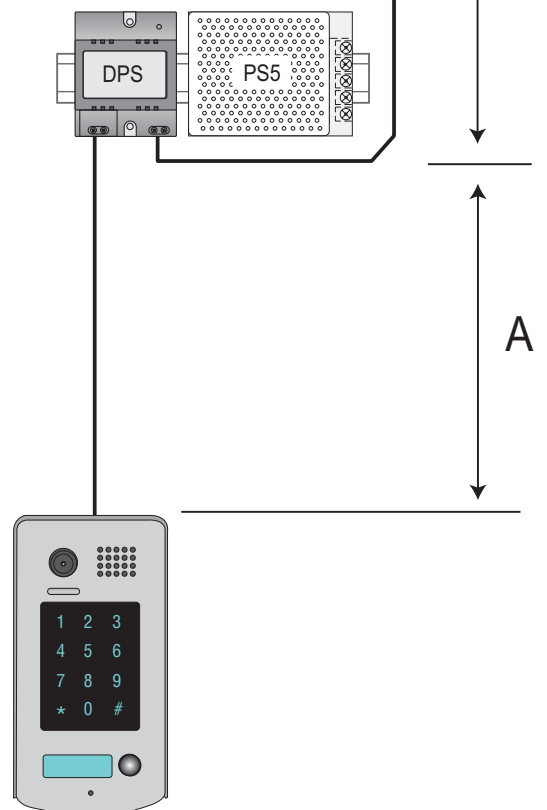
When Monitor quantity < 20

Cable Usage	A	B	C
Twisted cable 2x0.75 mm <sup>2</sup>	60	60	30
Twisted cable 2x1 mm <sup>2</sup>	80	80	40

When Monitor quantity > 20

Cable Usage	A	B	C
Twisted cable 2x1 mm <sup>2</sup>	70	30	20
Twisted cable 2x1.5 mm <sup>2</sup>	70	50	30

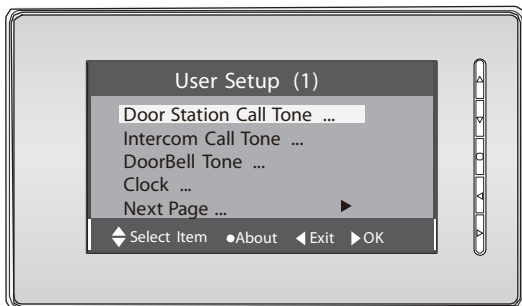
Note: If the monitor has been specified the distance, refer to the parameter.



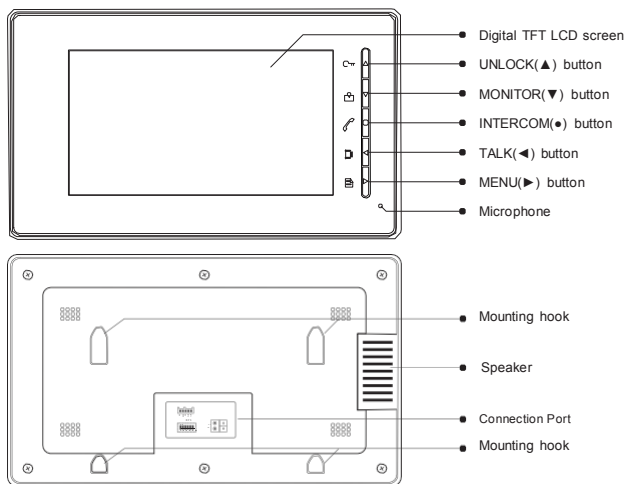
# 2 WIRE VIDEO MONITOR

---

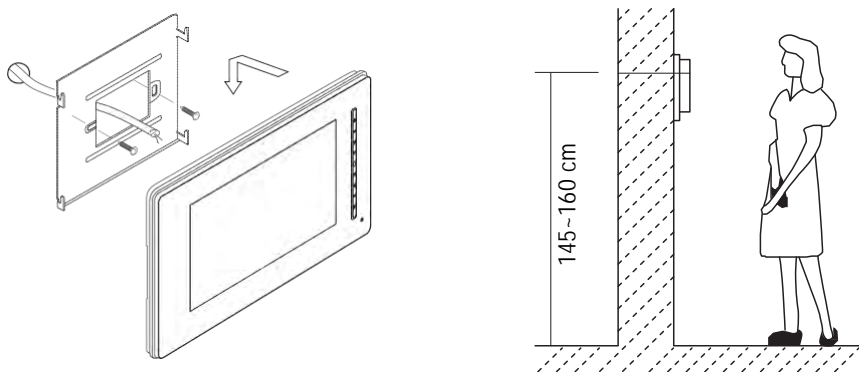
## USER MANUAL



## 1. Parts and Functions



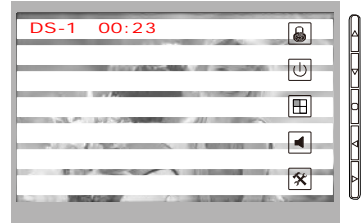
## 2. Monitor Mounting



1. Use the screws to fix the Mounting Bracket on the mounting box.(fitting accessories includes a Bracket (Two pieces of 4X25 screws are needed for fastening the Mounting Bracket), Special 2 wire cables to connect with Monitor)
2. Wire the system correctly(see the later connection chapter) then hang the Monitor on the Mounting Bracket firmly.

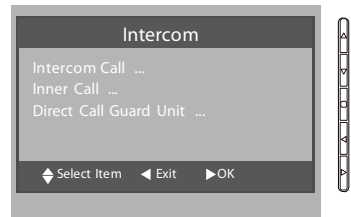
### 3. Basic Door Release Operation



1. Press **CALL** button on outdoor station, the Monitor rings, at the same time, the screen displays the visitor image.
2. Press **TALK** (◀) button on monitor, you can communicate hands free with the visitor for 90 seconds. After finishing communication, press "TALK" button again to end the communication. If nobody answers the phone, the screen will be turned off automatically after 30 seconds.
3. During talking state, Press **UNLOCK** (▲) button to open the door for the visitor. If two locks are connected to door camera, press corresponding unlock button to open the matching door.
4. When the monitor is in standby mode, press **MONITOR** (▼), the screen can display the view of outside. If multi door stations are installed, press **INTERCOM** (●) button to enter camera switch mode. Select **Camera 1 ...** item, the screen will display the image from the first door camera. Similarly. Select **Camera 2 ...** item to choose the second one. Select **Camera 3 ...** item to choose the third one. Select **Camera 4 ...** item to choose the fourth one. (Press "MONITOR" button again to end monitoring.)



### 4. Intercom Function

When the monitor is in standby mode, press **INTERCOM** (●) button to enter Intercom Function page. Use ▲ / ▼ button to move upward / downward to select the item you want, press **MENU** (▶) button to confirm.



other apartments in the system. the namelist will be created automatically by the system. Select a name on the screen then press  MENU (  ) button to

2.The DIP switches code of each monitor must set different.)



**Inner Call:** If multi Monitors are installed in the same apartment, select Inner Call, all the other Monitors will ring at the same time, whichever Monitor answers the call, conversation is started.and the other monitors will stop ringing at the same time.(note:the DIP switches setting of all monitors must be same. )

**Direct Dial Guard unit:** A Monitor can be assigned as Guard Unit Monitor; when the Guard Unit Monitor answers the call, conversation with the guard person is started..



## 5. Basic Setup Instructions

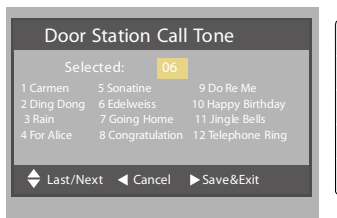
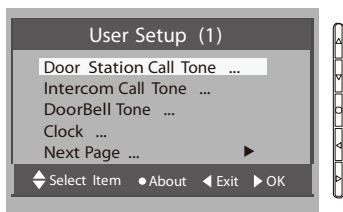
### Ring Tone Settings

Select **Door Station Call Tone**, **Intercom Call Tone** or **DoorBell Tone** item on User Setup (1) page, There are 12 pieces ring tones can be selected.use ▼ /▲ Button to select last/next ring tone, press  MENU (  ) button to save and exit.

Door Station Call Tone :set the ring tone calling from outdoor station.

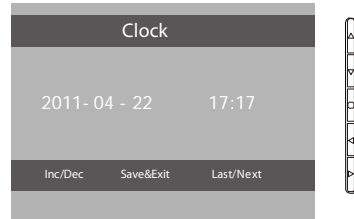
Intercom Tone :set the ring tone calling from other apartments.

DoorBell tone :set the ring tone calling from door bell.



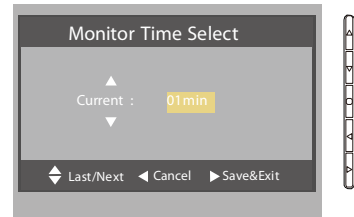
## 6. Date and Time Setting

Select Clock... item on User Setup (1) page. Input date and time by pressing ▲ / ▼ button to increase / decrease the value; press ◀ / ▶ button to select last/next digit. After finish, press ⌘ INTERCOM (●) button to save and return last page.



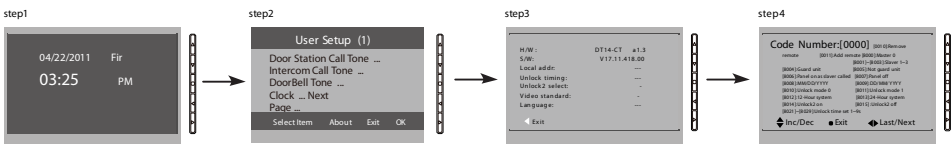
## 7. Monitor Time Setting

Select **Manual Monitor** item on main menu page, then select Monitor Time Set... item. Use ▲ / ▼ Button to increase / decrease the value; After finish, press ⌘ INTERCOM (●) button to save and return last page.



## 8. Monitor Installation Setting

### How to enter the installation setting page



1. Press MENU (▶) button in standby mode. A calendar will be showed, then press MENU button again.
2. Press ⌘ INTERCOM (●) button at User Setup (1) page to enter About information page.
3. Press UNLOCK (▲) button and hold for 2s.
4. Press ▲ / ▼ button to increase/decrease the value and ◀ / ▶ button to select the setting number ,press MENU (▶) to save the settings after inputing 4 digits number, press ● button to return last page.

## How to set the monitor panel on

In default mode,when receive a calling,the master and slave monitors will ring at the same time,and just the master monitor can display the image while the slave monitors can not.But the settings can be changed,you can set the master monitor and all the slave monitors to panel on at the same time when receiving a call, just input the code number of 8006 on each slave monitor.

## How to set the unlock parameter

Unlock mode:

There are two unlock modes: 1.power-on- to-unlock type:unlock mode=0(by default)  
2.power-off-to-unlock:unlock mode=1.

The code number of 8010 is used to set the unlock mode to 0

The code number of 8011 is used to set the unlock mode to 1

Unlock time:

The unlock time can be changed by yourself at any time.it can be set from 1 to 9 seconds.

The code number from 8021 to 8029 are used to set the unlock time to 1~ 9 seconds.

## 2 locks control

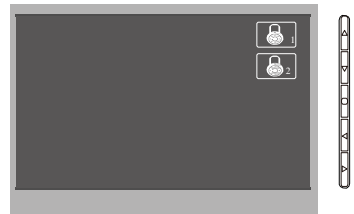
The monitor can be set to control 2 locks while you should set the unlock2 item to "on " state.

The code number of 8015 is used to set the unlock2 off that it can only control one lock.

The code number of 8014 is used to set the unlock2 on that it can control two locks.

Note:1. During talking or monitoring state, press  $\text{C}\overline{\text{T}}$  UNLOCK (▲) button,two unlock icons will be showed. press  $\text{C}\overline{\text{T}}$  UNLOCK (▲) button to release the first lock, press  $\text{C}\overline{\text{T}}$  UNLOCK (▲) button to release the second lock,press  $\text{M}$  MONITOR (▼) to return last page.

2. Restore to default operation will not chang the parameters setting.



## How to set the menu language

The monitor can support multi languages and it is so simple and fast, just input the corresponding language code on monitor. The language code number are as follows:

8101: English	8107: Portuguese	8113: Russian
8102: French	8108: S-Chinese	8114: Slovakia
8103: Spanish	8109: T-Chinese	8115: Hungary
8104: Italian	8110: Greek	8116: Czech
8105: German	8111: Turkish	
8106: Dutch	8112: Polish	

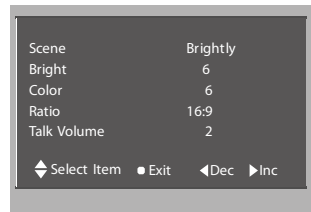
Note: the monitor can only support 4 types of languages. English, French, Spanish and German are default. But you can customize any 4 languages by yourself. The language which is unavailable will be set to English in default.

## 9. Screen and Volume Adjustment

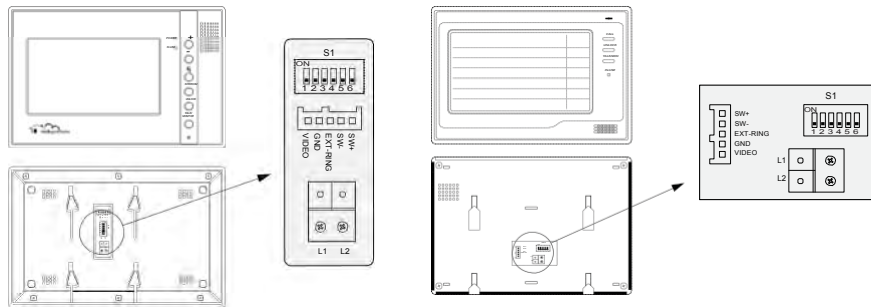
During monitoring or talking, press MENU Button, the ADJUST MENU will be displayed.

Press ▲ / ▼ button to select the adjustment item; press ◀ / ▶ button to decrease / increase the value.

1. The first item is Scene mode selection: Total 4 screen modes can be selected in sequence: Normal, User, Soft and Bright. Whenever you modify Brightness or colour, Scene item will be set to User mode automatically.
2. The Brightness and Colour item is for the image quality setting, adjust the value to get the best image you like.
3. The Ring Volume and Talk Volume items are ring tone and talking volume adjustment.
4. Note that all the modifications will be done immediately after the operation. Press "MENU" button to quit the adjust page.

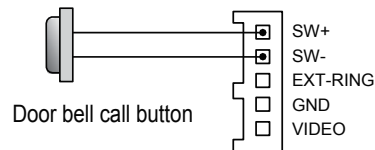


## Additional Monitor Connections



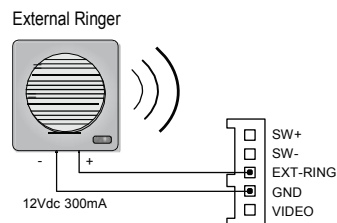
### 1. Door Bell Call Button

Additional door bell call button can be connected to the Monitor, so that the visitors can ring the door bell again in front of the user's apartment. When the call button is pressed, the Monitor will output ring tones but the screen will keep off, and the external ringer will ring at the same time (if an external ringer is installed).



### 2. External Ringer

External ringer can be connected to the Monitor. The ringer will ring whenever the Door Station call button or the door bell call button is pressed, and it will stop ringing when the Monitor rejects or answers the call.



### 3. TV-out function

Connect television to the Monitor, when the Door Station calls, the user switch the channel to the AV channel, and the visitor's video will show up on the screen of the television. The core of the video cable must connect to the VD terminal, and the shielded layer connect to the GND.

