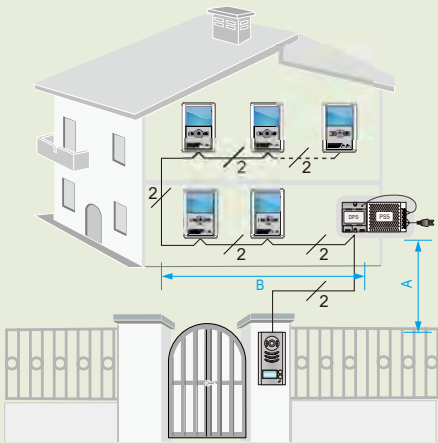


Villa application

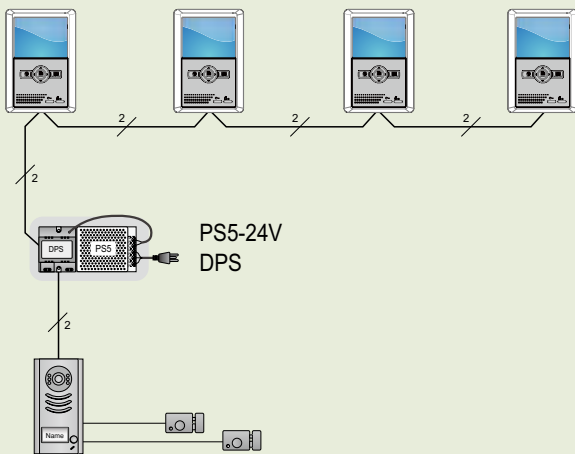


Cable and Distance

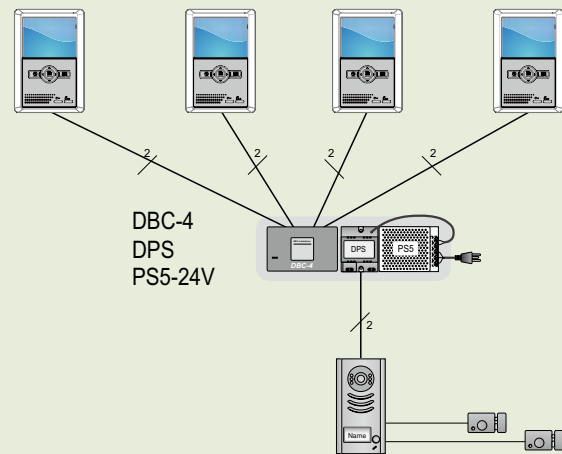
Cable	A(m)	B(m) ≤2 VT25	B(m) ≤16 VT25
CAT5 Cable (Combined)	40	80	—
Pair Cable (Parallel) 2X0.75 mm ²	30	50	—
Twisted Cable 2X0.75 mm ²	60	100	40
Twisted Cable 2X1.0 mm ²	80	120	60

Extending Monitors(up to 16)

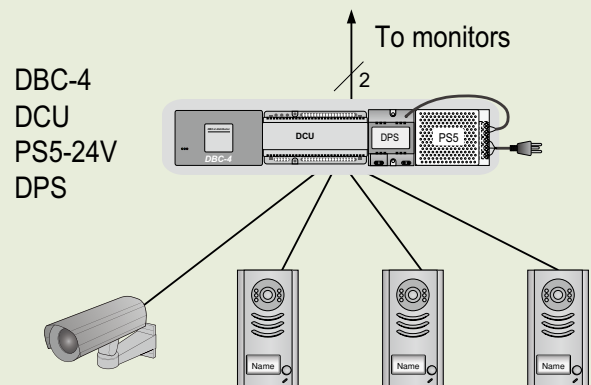
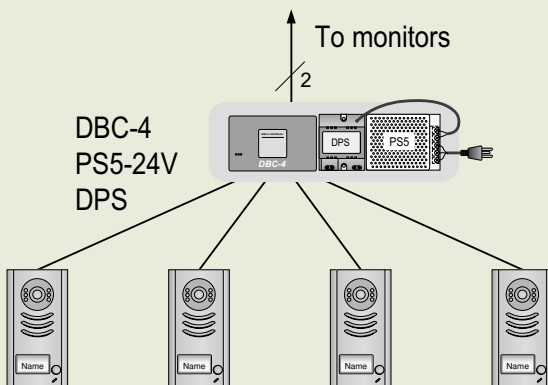
In-Out topology:



Star topology:



Extending Door/CCTV Cameras



2 -Wire Intercom System

596SÚ User Manual



Programming the 596KP keypad Basic set up configuration

The manual for the 596KP is quite in-depth so please refer to the basic set-up as written below but also please read the manual carefully

Both door panel and video monitor have DIP switches to the rear of them which are used for different configurations, mainly they are used if you have multi door panel installations. If you have the basic system of 1 x door panel and 1 x video monitor then you do not need to worry about the DIP switches at all, they should all be set to the OFF position

To program the 596KP keypad for basic set up configuration in less than two minutes you will need to enter the program mode by entering the master default code

The default master code is 1234, so you would press 1234# (1 x hash)
The Red LED will light up to confirm you are now in the programming mode

If you do not press any button for up to 60 seconds the keypad will exit from the programming mode

To manually exit from the programming mode press the * key (1 x star)

To program a user code only – example code 9009

Enter the programming mode by pressing the master code of 1234# (1 x hash)
Press 21# – this is user code position 1
Press 9009# – this is your new user code, if successful the keypad will bleep twice
Press * to exit (1 x star)
Press the user code 9009# to test and the Red LED will light to confirm relay one is activated

To program the lock release timer

Enter the programming mode by pressing the master code of 1234# (1 x hash)
Press 03# then 09# for 9 seconds
Press * to exit (1 x star)
Enter 9009# and the keypad Red LED will light up for 9 seconds

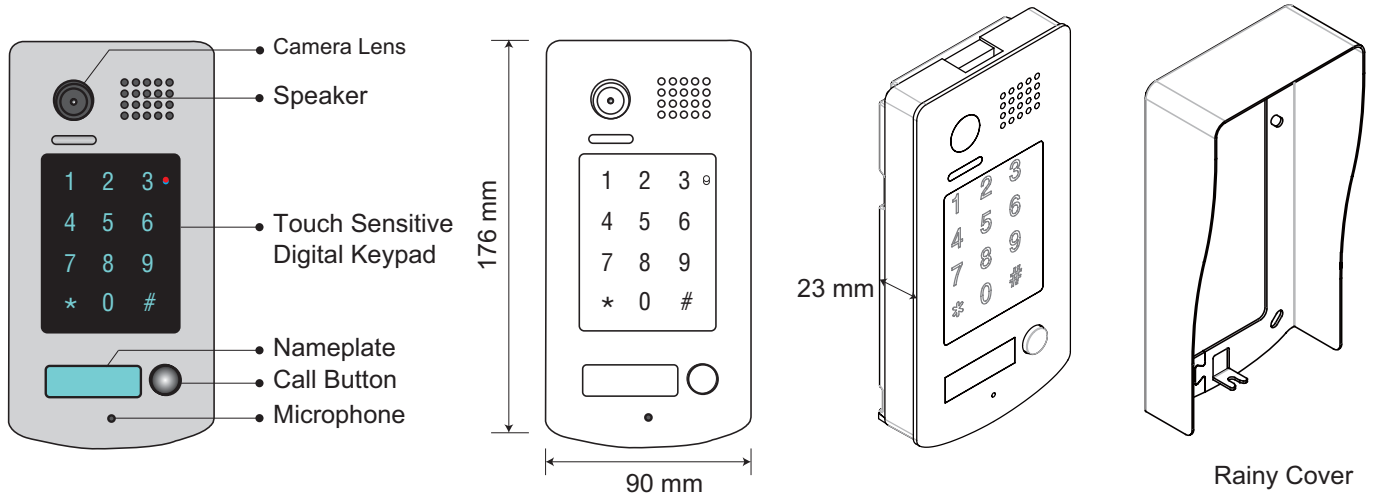
To change the master default code of 1234 to 5678 (or your chosen number)

Enter the programming mode by pressing 1234# (1 x hash)
Press 01#
Press 5678# – this is your new master code, if successful the keypad will bleep
Press * to exit (1 x star)

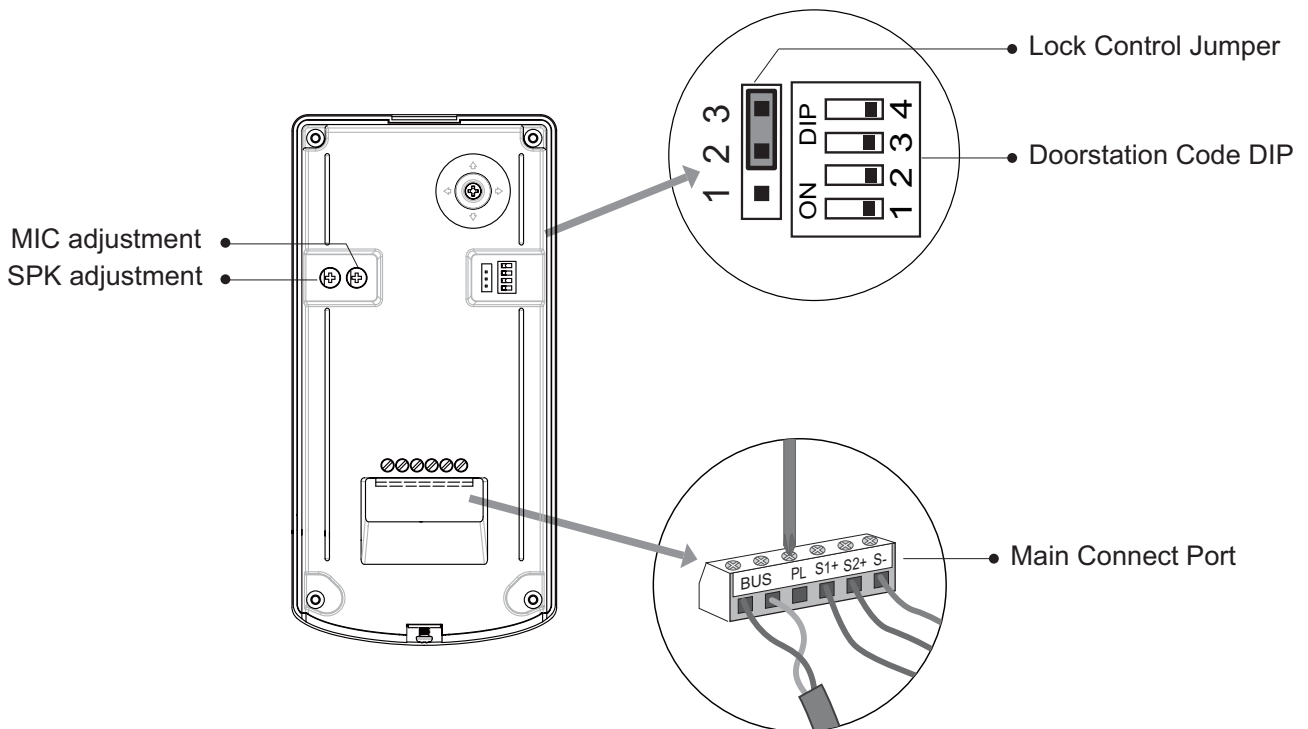
Important:

do NOT forget your new mater code as you cannot reset the keypad without the master code

1. Parts and Functions

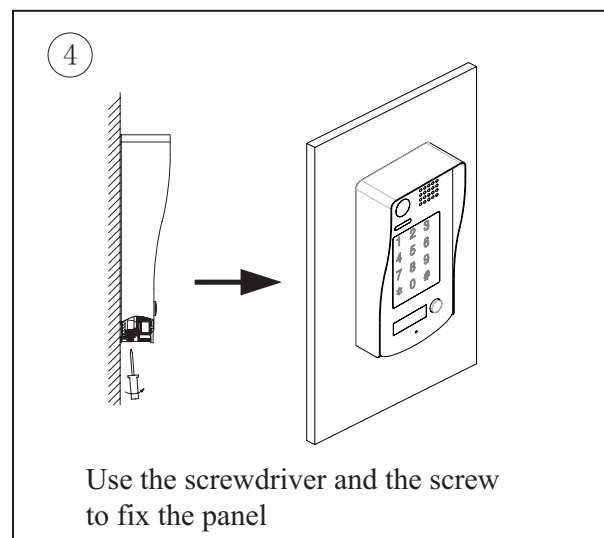
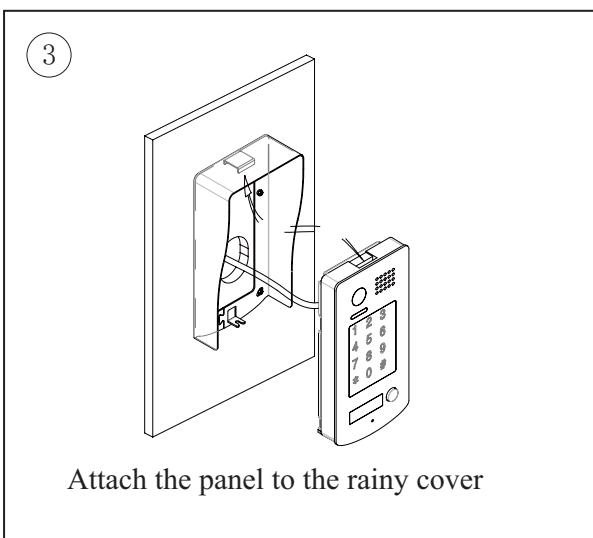
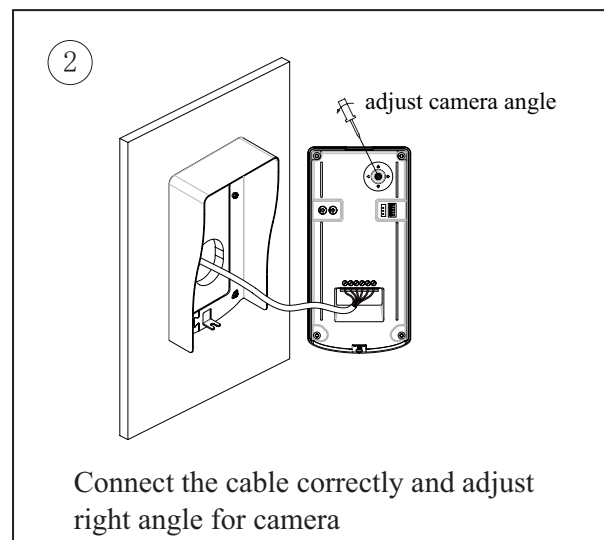
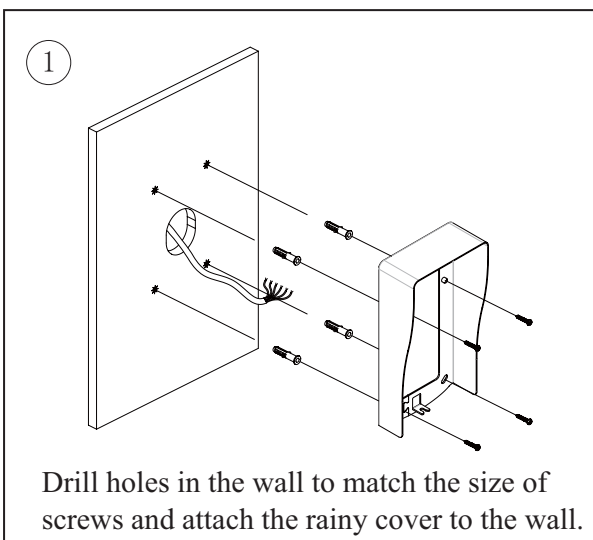


2. Terminal Descriptions



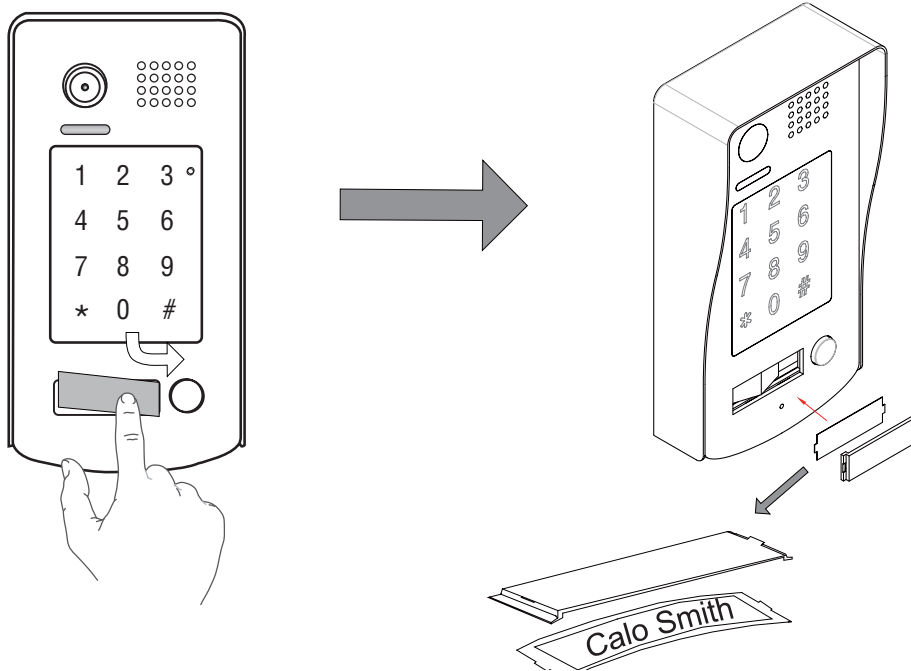
- **Lock Control Jumper:** To select the lock type: see section 5
- **Doorstation Code DIP:** Total 4 door stations can be supported, see section 6
- **MIC:** Adjust the volume of Microphone
- **SPK:** Adjust the volume of Speaker
- **Main Connect Port:** To connect the bus line and the electronic locks.
- **BUS:** Connect to the bus line, no polarity.
- **PL:** External lock power input, connect to the power positive(power +).
- **S1+, S2+:** Lock power(+) output, to connect 2 locks.
- **S-:** Lock power(-) output, connect to the power(-) input of locks(only when using the camera to power the locks, if using the external power supply for the locks, the S- will not be connected).

4. Door Station Mounting

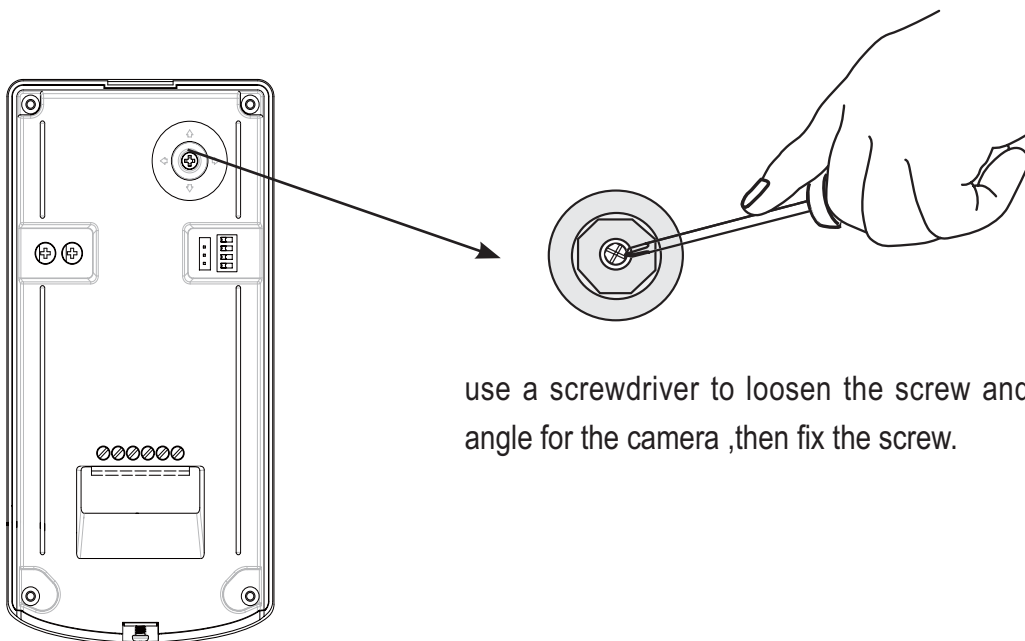


Placing Name Label

Move the plastic cover away to open the transparent name label cover, insert a name paper, then put the plastic cover back to the panel.



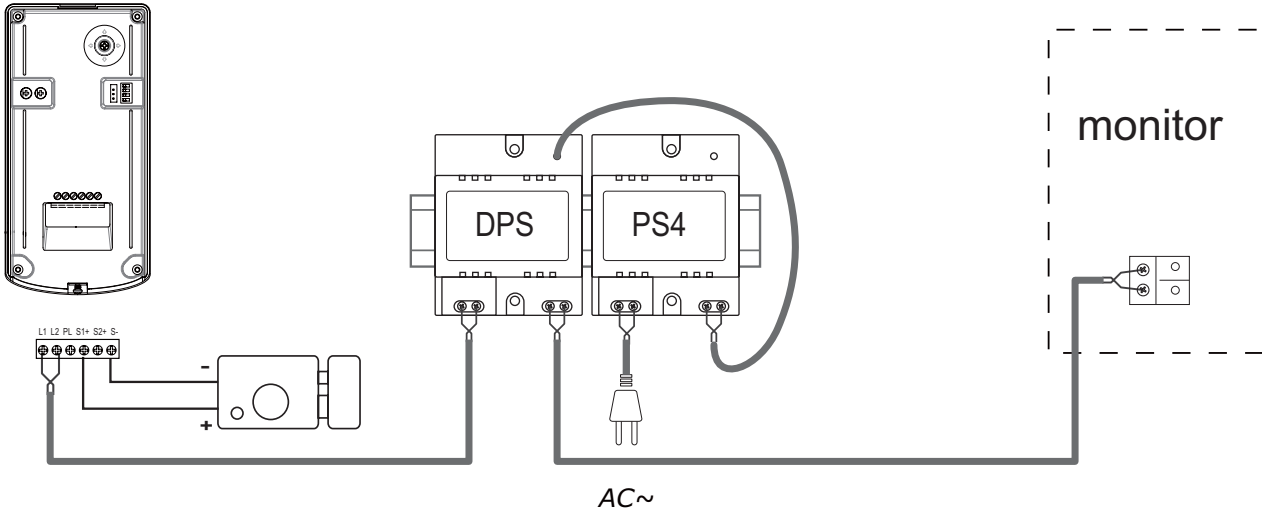
Adjusting Camera Angle



use a screwdriver to loosen the screw and adjust the angle for the camera ,then fix the screw.

5. System Wiring and Connections

Basic Connection



Electric Lock Connection

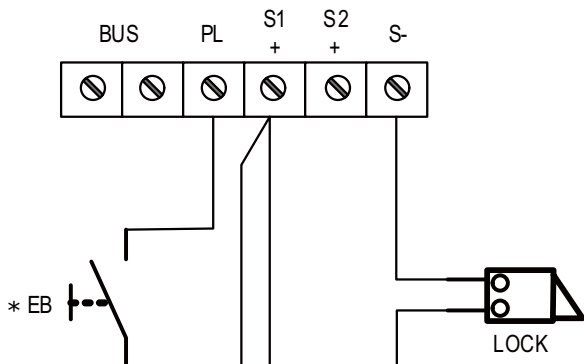
Door Lock Controlled with Internal Power

Note: Doentryonline Ltd recommend an additional power supply for any lock release used

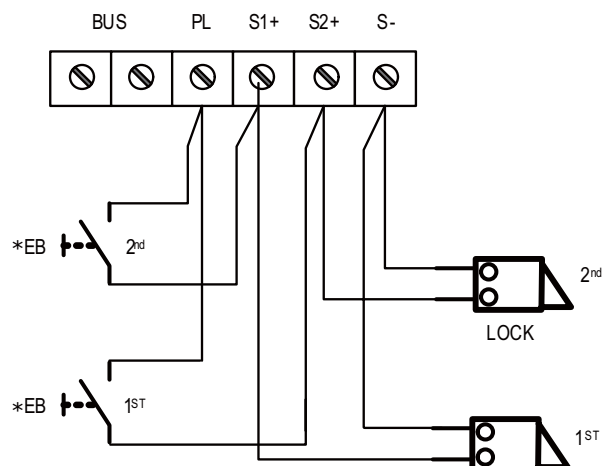
1. Electronic lock of Power-on-to-unlock type should be used.
2. The door lock is limited to 12V, and holding current must be less than 250mA.
3. The door lock control is not timed from Exit Button(EB).
4. The **Unlock Mode** Parameter of Monitor must be set to 0 (by default).



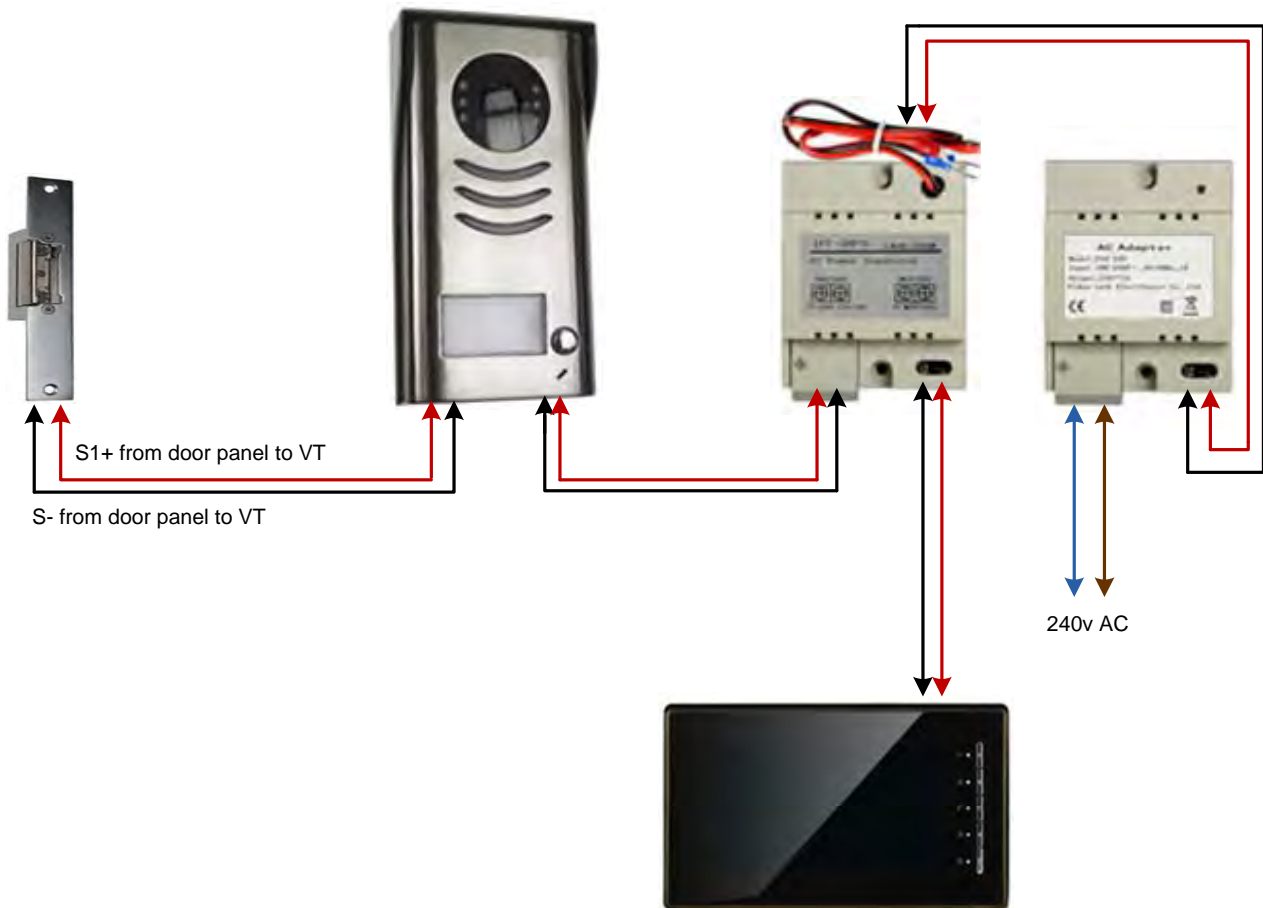
Jumper position in 2-3



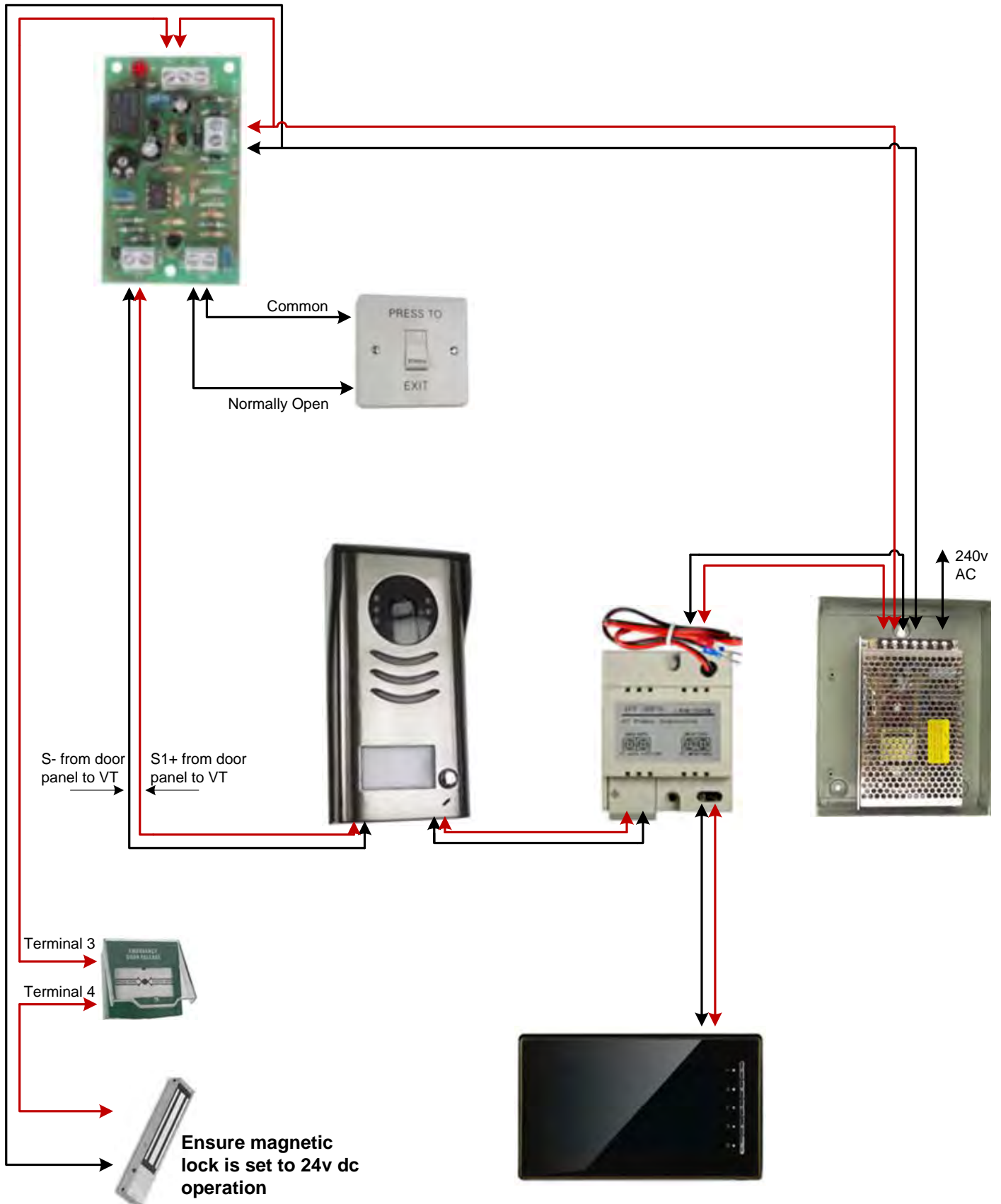
Jumper position in 2-3



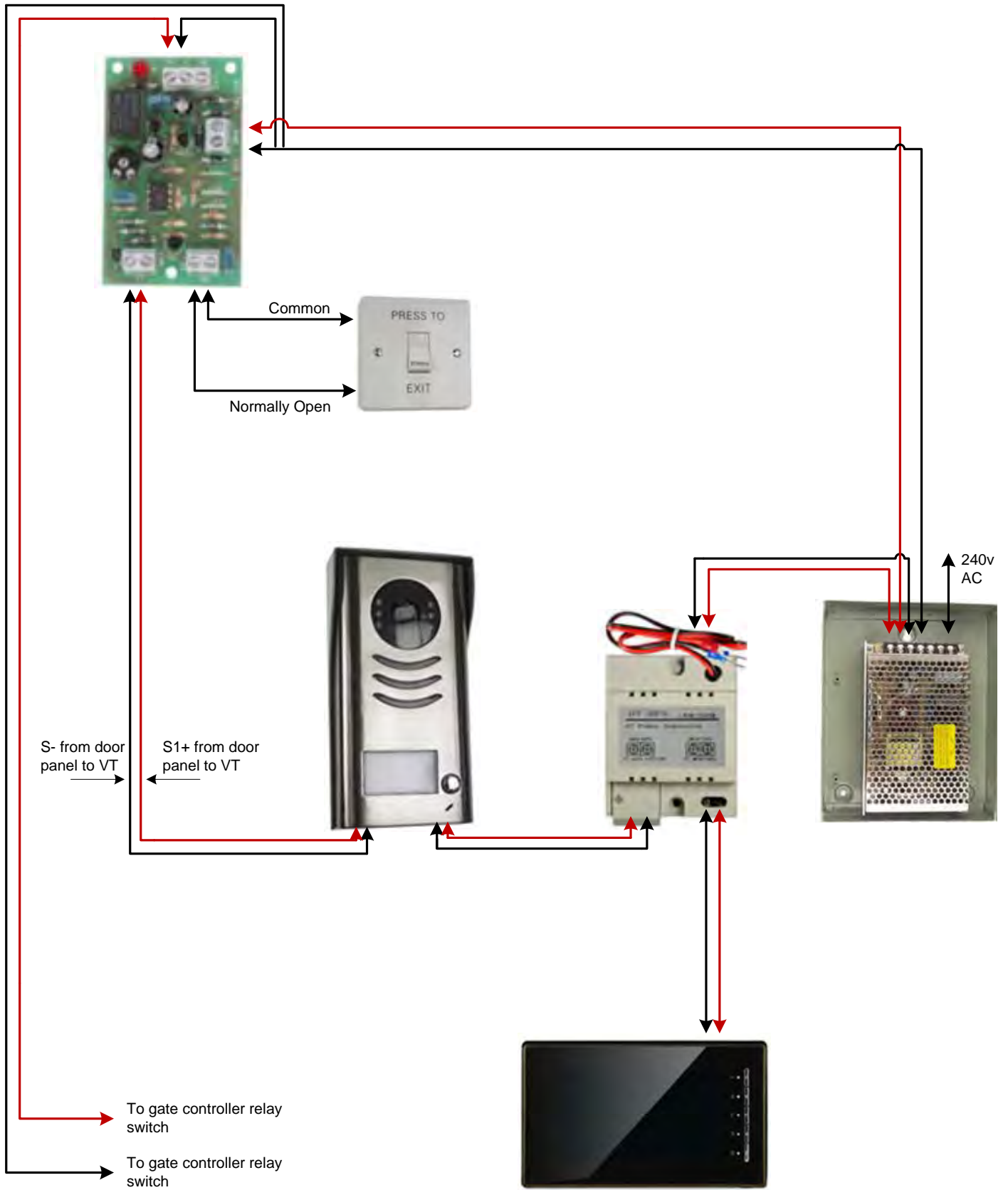
Connecting to a standard lock release

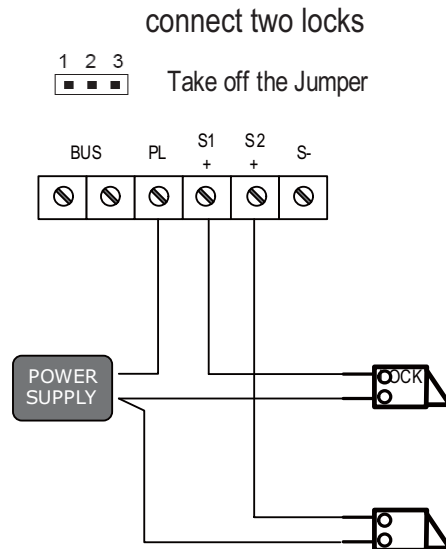
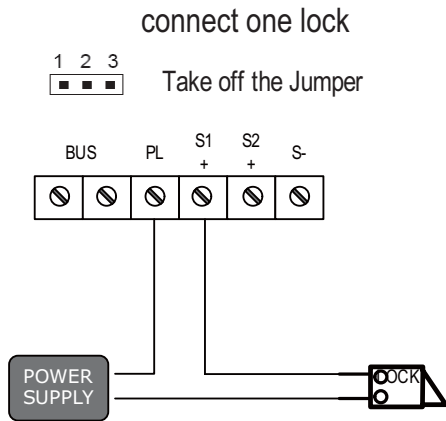


Connecting to a magnetic lock

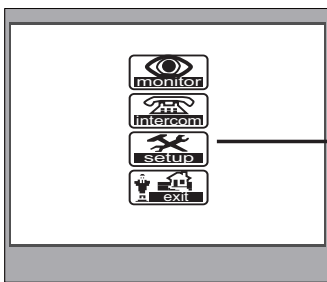


Connecting to an automated gate

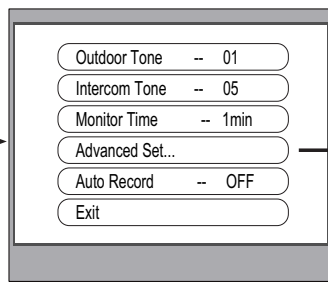




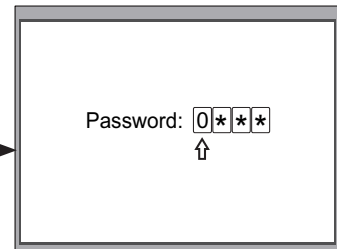
Unlock parameter setting(set in monitor)



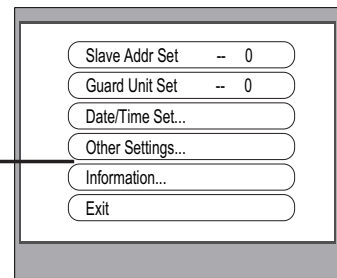
1. Press setup item on main menu page.



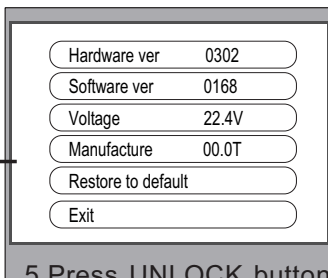
2. Select Advanced Set...item a password will be asked.



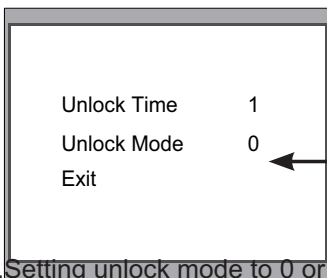
3. The default password is 2008.



4. Select Information...item



5. Press UNLOCK button and hold for 2s.



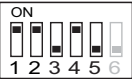

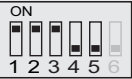
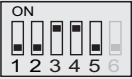


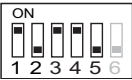









6. Setting unlock mode to 0 or 1

Note:

1. must connect VT596 correctly before setting.
2. the parameter will be saved in VT596 automatically, so you need only set on one monitor.

Bit-1 to Bit-5 are used to User Code setting.The VT596 responds to 0~15 .

Bit state	User Code	Bit state	User Code	Bit state	User Code
	Code=0		Code=6		Code=11
	Code=1		Code=7		Code=12
	Code=2		Code=8		Code=13
	Code=3		Code=9		Code=14
	Code=4		Code=10		Code=15
	Code=5				

7. Functions Setting Up

This section explains the settings of each function, please refer to the following table:

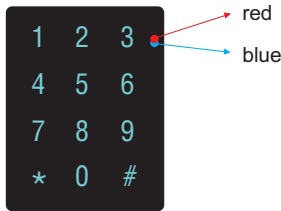
About the setting mode:

Input the master code to switch to the setting mode, and input the corresponding setting code to perform the settings for the function you want. After settings have been made, input the following setting codes to continue the setting operation. Press "*" to exit the setting mode.



- The example is set * as cancel button and # as confirm button, please refer to */# function setting for detail information.
- Forbid to slide to touch the digital keypad, it may cause mistaken key, the correct operation is using your finger to press the digital you desired.
- You should press "confirm" button after finish inputting the code number each time, otherwise, the operation will be canceled automatically in 10s.

Order	Setting items	Setting range	Default value	Setting code
1	Reset all settings	1,2,3,4	-	00
2	Setting the master code	1 ~ 12 digits Valid keys:0 ~ 9	1,2,3,4	01
3	Setting the key illumination time	10 to 99 seconds/ continually lit	10 seconds	02
4	Setting the unlock time	01 to 99 seconds	1 seconds	03
5	Setting the unlock mode	0:opened/1:closed	opened	04
6	Operation tone settings	0:on/1:off	on	05
7	Reset code settings	1,2,3,4	-	06
8	*&# function settings	0:Normal/1:Reverse	Normal	07
9	Call tone settings	0:Enable/1:Disable	Enable	08
10	Interference resistant grade settings	Valid keys:0 ~ 5	2	09
11	Reserve(not used)	Reserve	Reserve	10~17
12	Setting the code forTemporary1	1 ~ 12 digits Valid keys:0~9	-	18
13	Setting the code forTemporary2	1 ~ 12 digits Valid keys:0~9	-	19
14	Setting the code for user group1	1 ~ 12 digits Number of codes:40 Valid keys:0~9	-	20~59
15	Setting the code for user group2	1 ~ 12 digits Number of codes:40 Valid keys:0~9	-	60~99



Each operation is indicated by the lighting up of the LED indicators on the right section of the unit, and by the sounding of the buzzer.

Input the master code.
(Default: [1 2 3 4] +[#])

(red) ON (blue) OFF
● ○ Beep+, Beep

1.Reset all settings 2.Setting the master code (Default : 1234) 3.Setting the key illumination time (Default : 10s) 4. Setting the unlock time (Default : 1s)

Input the setting code.
00+#

(red) ON (blue) ON
● ● Beep+, Beep

Input the setting code.
01+#

(red) ON (blue) ON
● ● Beep+, Beep

Input the setting code.
02+#

(red) ON (blue) ON
● ● Beep+, Beep

Input the setting code.
03+#

(red) ON (blue) ON
● ● Beep+, Beep

Inputting of code
1234+#

(red) ON (blue) OFF
● ○ Beep+

Inputting of new master code (ex.: 4321)(1~12 digits)
4321+#

(red) ON (blue) OFF
● ○ Beep+

Inputting of code (ex.: 10) range:00 or 10~99
10+#

(red) ON (blue) OFF
● ○ Beep+

Inputting of code (ex.: 09) range:01~99
09+#

(red) ON (blue) OFF
● ○ Beep+

- When the “ * cancel” key is pressed, the LED lights off, the buzzer beeps, and the system exits the setting mode
- When there isn't any operation in 10s, the LED lights off, the buzzer beeps, and the system exits the setting mode

(red) OFF (blue) OFF
○ ○ Beep, Beep+

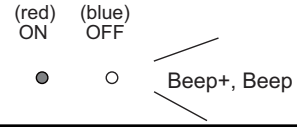
- All settings will restore to their default value.
- When power on or activate the reset all setting item, the keypad checking will carry out, during this time, the key illumination will blink and the touching operation is forbidden, after finish checking, the key illumination will stop blinking and sent out a long sound of beep

- The master code is allowed 1~12 digits, the same code cannot be set for both the user code and the master code, it is recommended that you modify the default master code.

- If the key illumination time is set to 00, the key illumination will light up all the time when power on.
- If the key illumination time is set to 10~99, the key illumination will light up for 10~99 seconds. At this mode, the key illumination lights off in standby mode, touching any digital key can illuminate, but this is the invalid digital.

- The unlock time can be set on both monitor and door station, and the valid value is the number you set last time.

Input the master code.
(Default: [1 2 3 4] +[#])

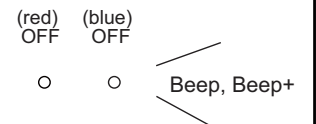


5. Setting the unlock mode (Default : 0(opened)) 6. Setting operation tone (Default : ON) 7. Reset code setting 8. *&# function setting (Default : Normal)

<p>Input the setting code. 04+#</p>	<p>Input the setting code. 05+#</p>	<p>Input the setting code. 06+#</p>	<p>Input the setting code. 07+#</p>
--	--	--	--

<p>0/1 Inputting of code (ex.: 1) range:0:(open)/1:(close) 1+#</p>	<p>0/1 Inputting of code (ex.: 1) range:0:(on)/1:(off) 1+#</p>	<p>Inputting of code 1234+#</p>	<p>0/1 Inputting of code (ex.: 1) range:0:(normal)/1:(reverse) 1+#</p>
---	---	--	---

- When the “ * cancel” key is pressed, the LED lights off, the buzzer beeps, and the system exits the setting mode
- When there isn't any operation in 10s, the LED lights off, the buzzer beeps, and the system exits the setting mode



- The unlock mode can be set on both monitor and door station, and the valid value is the number you set last time.

- When the operation tone is set to 0, pressing the digital keypad will sent out a sound of beep.
- When the operation tone is set to 1, pressing the digital keypad will blink one time.

- Cancel all the passwords except the master code.
- Restore the master code to default value(1,2,3,4)

- When the item is set to 0, press the * button to cancel the input, and press the # button to confirm the input.
- When the item is set to 1, press the # button to cancel the input, and press the * button to confirm the input .

Input the master code.
(Default: [1 2 3 4] +[#])

9. Call tone setting (Default : enable) **10. Interference resistant grade setting (Default : 2)**

Input the setting code.
08+#

Input the setting code.
09+#

0/1
Inputting of code (ex.: 1)
range:0(enable)/1:(disable)
1+#

Inputting of code (ex.: 3)
range:0~5
3+#

- When the “ * cancel” key is pressed, the LED lights off, the buzzer beeps, and the system exits the setting mode
- When there isn't any operation in 10s, the LED lights off, the buzzer beeps, and the system exits the setting mode

- If the item is set to 0, the unit will respond a call tone when pressing the “CALL” button.
- If the item is set to 1, the unit will have no responds when pressing the “CALL” button.

- The larger you set the interference resistant grade, the stronger it will be, but the sensitivity of the keypad will be more lower.
- The interference resistant grade setting also will activate the keypad checking.

Input the master code.
(Default: [1 2 3 4]+[#])

12. Setting the code for Temporary1 **13. Setting the code for Temporary2** **14. Setting the code for user group1** **15. Setting the code for user group2**

<p>Input the setting code. 18+#</p>	<p>Input the setting code. 19+#</p>	<p>Input the setting code. (ex.:21) 21+#</p>	<p>Input the setting code. (ex.:60) 60+#</p>
--	--	---	---

<p>Inputting of code (ex.: 1006) 1~12 digits 1006+#</p>	<p>Inputting of code (ex.: 2011) 1~12 digits 2011+#</p>	<p>Inputting of code (ex.: 2011) 1~12 digits 2011+#</p>	<p>Inputting of code (ex.: 2012) 1~12 digits 2012+#</p>
--	--	--	--

- When the “ * cancel” key is pressed, the LED lights off, the buzzer beeps, and the system exits the setting mode

- When there isn't any operation in 10s, the LED lights off, the buzzer beeps, and the system exits the setting mode

- When input the correct temporary password to release the door, the system will clear the temporary password after 60 seconds automatically. But you should know that the password is valid within 60 seconds after inputting the correct temporary password
- The temporary1 is used to release the first lock, and the temporary 2 is used to release the second lock.
- If the password length exceeds 12 digits, the system will send out the sound of “beep,beep,beep,beep”, and the digitals you input before will be cleared at the same time.
- The temporary code can not be set the same as the master code and user code.

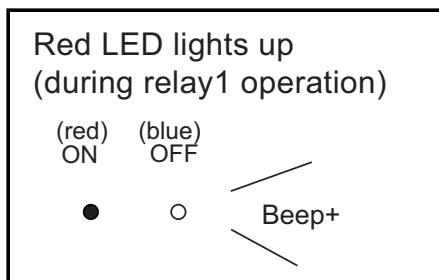
- The user code group1 is used to release the first lock, and the user code group2 is used to release the second lock.
- The user code group1 and user code code group2 can contain 40 group passwords
- If the password length exceeds 12 digits, the system will send out the sound of “beep,beep,beep,beep”, and the digitals you input before will be cleared at the same time.
- The user code can not be set the same as the master code and temporary code.

8.Unlock Operations

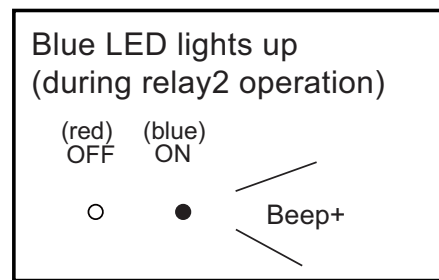
Unlocking of user code

When the registered user code has been input using the keypad (1~12 digits), the LED indicator (group 1: red, group 2: blue) lights up, the buzzer sounds,and the electric door strike is unlocked.

Example:group 1
2011



Example:group 2
2012



- The time interval during which the button must be pressed is approximately 10 seconds. If the time interval exceeds approximately 10 seconds, the input value will be cleared.
- If you make a mistake when inputting the user code,press the "cancel" button and input the user code again.
- When the "Lockout" function has been activated, the release function is forbidden and the input operation is disabled for 60 seconds if 10 times incorrect access codes are continuously attempted. ("Lockout" function:When "Lockout" is activated,the relay 2 doesn't respond the second lock but responds the LOCKOUT function.After continuously inputting incorrect access code 10 times,LOCKOUT output and the relay 2 will be closed for 60 seconds,the LED-relay 2 will be illuminated for 60 seconds) During this time,the buzzer will continuously sound about 8 times.
- You can activate the electric door strike by pressing the request to exit button connected to the unit. Pressing request to exit button 1 releases relay 1, and pressing request to exit button 2 releases relay 2.(The unlock function will work when the request to exit button is pushed, even while the "Lockout" function is operating.)



1. During calling,pressing "cancel" button can cancel the calling
2. If input the incorrect access code,the buzzer will sound of beep,beep,beep

9. Power Supply Instructions

Name	Description	Usage
PS5-24V	Power supply,85~260Vac input,24Vdc/3A output,10 DIN modules	Connect with multi doorstations or multi monitors(up to 2 or above)
PS4-24V	Power supply,85~260Vac input,24Vdc/1A output,for basic kit only,4 DIN modules	Connect with one doorstation and one monitor(DT16 can be connected two)

10. Precautions

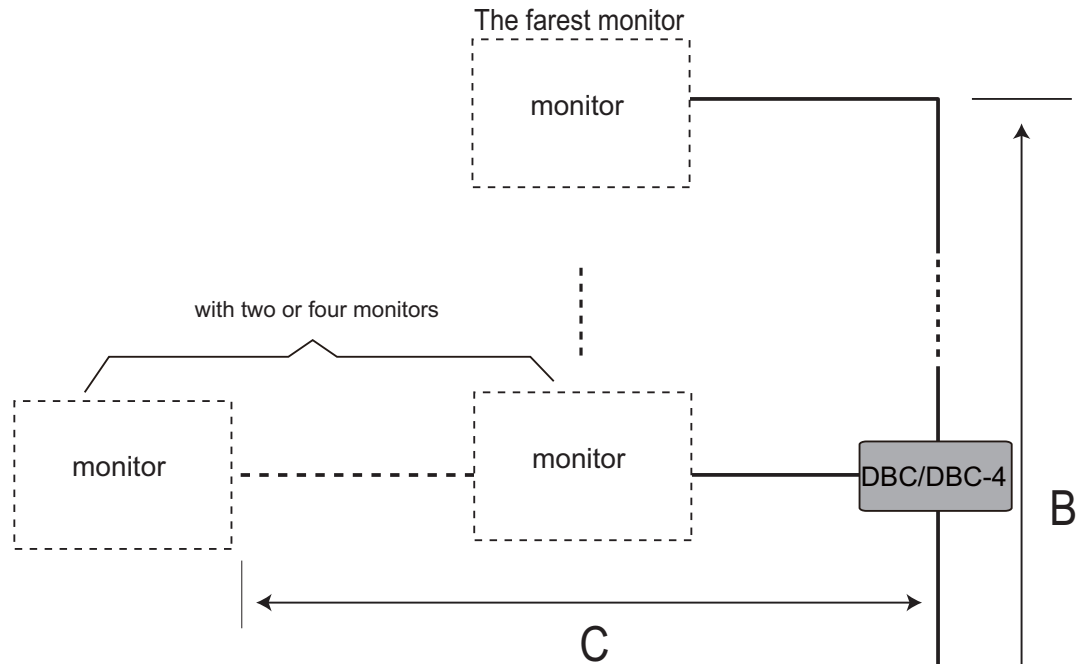
- Please clean the unit with soft cotton cloth, don't use the organic impregnant or chemical clean agent. If necessary, please use a little pure water or dilute soap water to clean the dust.
- The unit is weather resistant. However do not spray high pressure water on access control keypad directly. Excessive moisture may cause problems with the unit.
- You must use the right adaptor which is supplied by the manufacture or approved by the manufacture..
- Pay attention to the high voltage inside the products, please refer service only to a trained and qualified professional.

11. Specifications

- Lock Power supply: 12Vdc, 300mA(Internal Power)
- Power Consumption: 2W in standby, 8W in working
- NO, COM dry contact: Max. 48V dc 1.5A
- Camera angle: Max. 72°
- Number of relay circuits: 2
- Mounting: Surface mounting
- Dimension: 176(H)X90(L)X23(D)mm
- Working temperature: -10°C ~ 45°C

12.Cables Requirements

The maximum distance of the wiring is limited in the VT system. Using different cables may also affect the maximum distance which the system can reach.

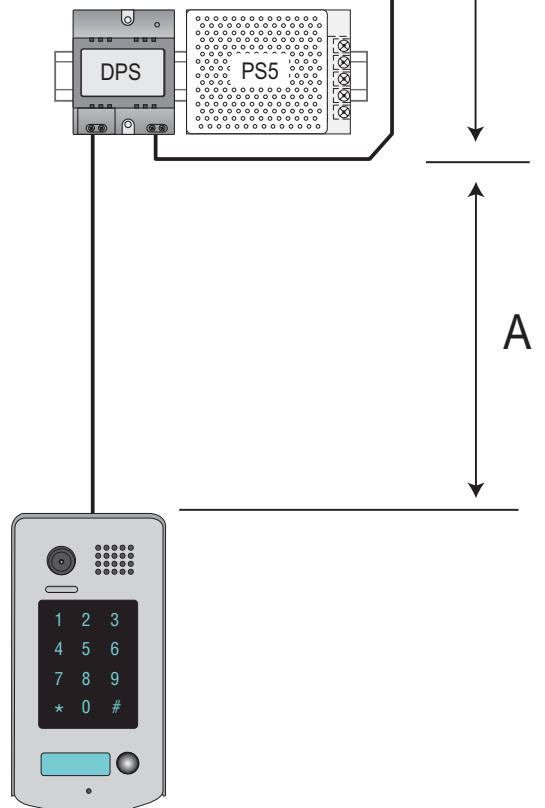


When Monitor quantity < 20

Cable Usage	A	B	C
Twisted cable 2x0.75 mm ²	60	60	30
Twisted cable 2x1 mm ²	80	80	40

When Monitor quantity > 20

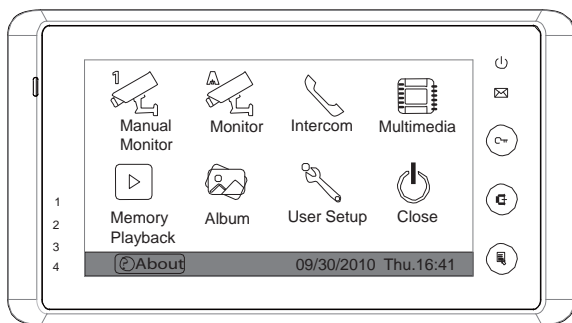
Cable Usage	A	B	C
Twisted cable 2x1 mm ²	70	30	20
Twisted cable 2x1.5 mm ²	70	50	30



Note: If the monitor has been specified the distance, refer to the parameter.

2 WIRE VIDEO MONITOR

USER MANUAL

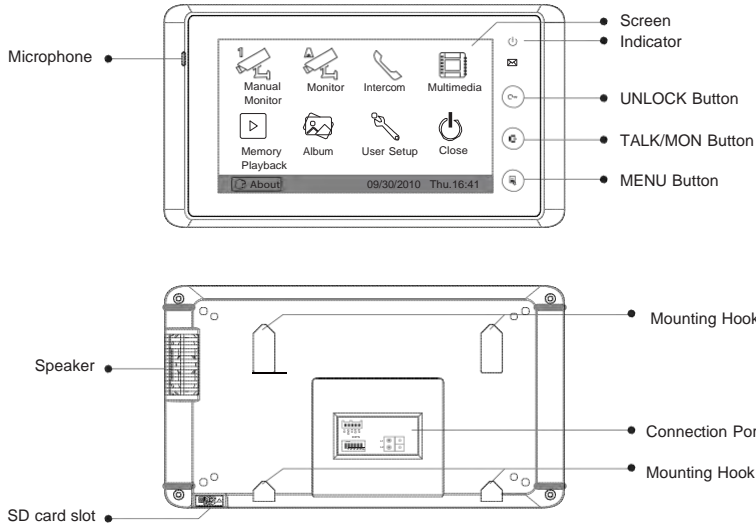


CONTENTS

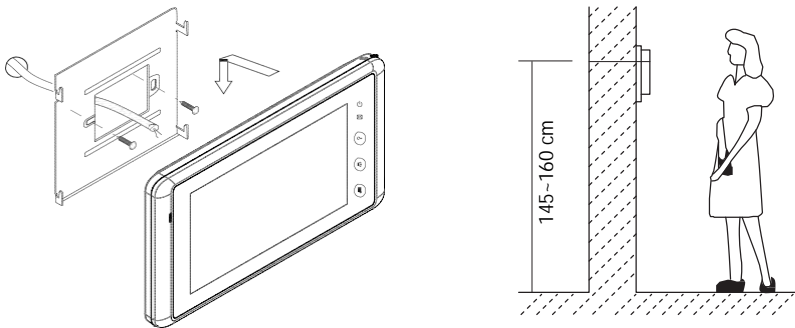
1. Parts and Functions	1
2. Monitor Mounting	1
3. Operation Instructions	2
4. Basic Setup Instructions	4
5. Built-in Memory and SD Card	7
6. Specification	9

Please read this manual carefully before using the product, and keep it well.

1. Parts and Functions



2. Monitor Mounting

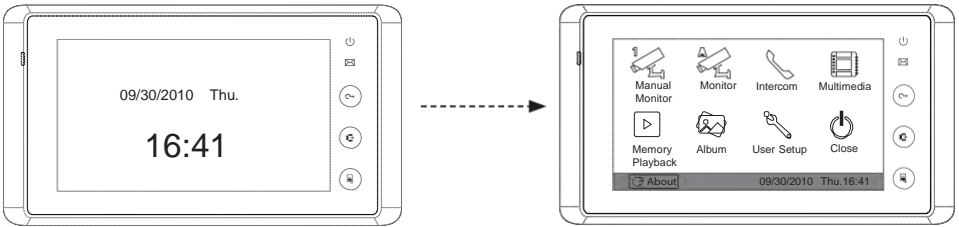


- Use the screws to fix the Mounting Bracket on the wall.(accessories include a Bracket, two 4X25 screws (use to fasten the Mounting Bracket), 2 wire cables (use to connect with Monitor)).
- Connect the system correctly. then hang the Monitor on the Mounting Bracket firmly.





3. Operation Instructions

How to Enter Main Menu

- Touch the screen anywhere (or press  MENU button) in standby mode,a full screen calendar will be showed.
- Touch the screen again (or press  MENU button again) to enter main menu.



Answering a Door Call






- Press CALL button on door station.The monitor rings, and the visitor's image will be seen on screen.If nobody answers the call, the screen will turn off in 30 seconds automatically.
- Press  TALK/MON Button or touch  icon, you can talk with the visitor for 90 seconds. During talking state, press  TALK/MON Button again or press  icon again to end the conversation. If the system connects two or more Monitors, pick up any Monitor, the others will be automatically shut off.

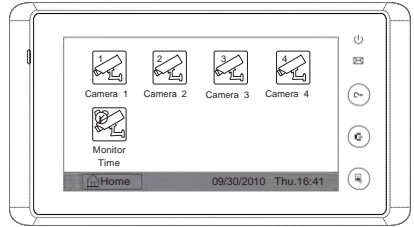


Door Release




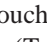

- During the conversation, press UNLOCK Button or touch  icon to unlock the door.(if two locks are connected to door camera,touch  **unlock 2nd** icon to release the second lock)

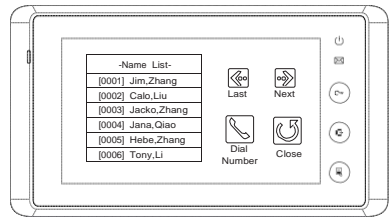
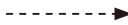
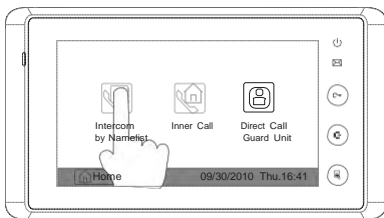
Entrance Monitoring

Press  TALK/MON button on monitor in standby mode, or touch  **Monitor** icon on main menu. the screen will display the view of the Outdoor Station. During monitoring, touch  **Manual Monitor** icon to get into the camera switching mode, (or directly touch  **Manual Monitor** icon on main menu page). if multi Door Stations are installed, you can press the camera 1/2/3/4 to monitor the Door Station or CCTV camera you want. press  **Home** icon to exit and enter main menu page.



Intercom Function




- **Intercom Call by namelist:** User in one apartment can call other apartments in the system. Touch  **Intercom** item on main menu page, then touch  **Intercom by Namelist** icon (the namelist will be created automatically by the system). Select a name on the screen then touch  **Dial Number** icon to call. Press  icon to enter last/next name list page. (Touch  **Dial Number** icon again to redial)

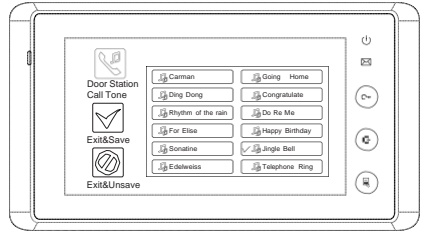


- **Inner Call:** If multi Monitors are installed in one user, select and press the Inner Call item, the other Monitors will ring at the same time, whichever Monitor answers the call, conversation is started, and the other monitors will stop ringing at the same time.
- **Direct Dial Guard unit:** A Monitor can be assigned as Guard Unit Monitor; when the Guard Unit Monitor answers the call, conversation with the guard person is started..

4. Basic Setup Instructions





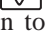

Ring Tone Setting

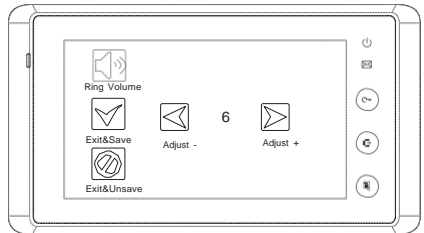
- Touch  **User Setup** icon on main menu page to enter call tone setting screen, touch Door station call tone/intercom call tone/door bell call tone, 12 pieces ring tones will be displayed, Choose a ring tone which you want, then touch  icon to save and exit, the ring tone will be performed. or touch  icon to unsave and exit.












Ring Volume Setting


Ring Volume

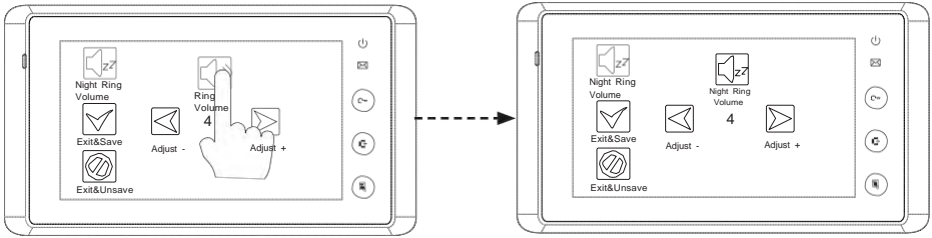
You can set a ring volume for day time, 6:00 AM~18:00 PM is the day time by default, enter main menu page, then touch  **User Setup** icon to enter next page, and then touch  **Ring Volume** icon to enter Ring Volume page, Use   icon to decrease/increase the volume. then touch  icon to save and exit, or touch  icon to unsave and exit.






Night Ring Volume

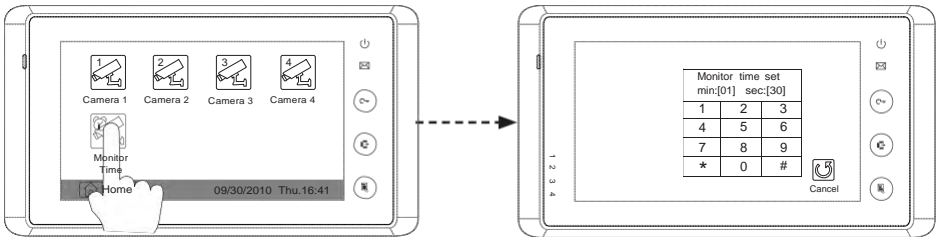
You can active a ring volume for night time, 18:00 PM~6:00 AM is the night time by default, if you don't want to be disturbed at night, you can set the volume to 0. Enter main menu page, touch  **User Setup** icon to enter next page, then touch  **Night Ring Volume** icon to enter Night Ring Volume page, Use   icon to decrease/increase the volume. After setting a value you want, you should touch  **Ring Volume** icon to active the setting, after that the Ring Volume  icon will change to Night Ring Volume  icon. then touch  icon to save and exit, night ring volume will be performed. or touch  icon to unsave and exit.

Note: touch  **Night Ring Volume** icon again, you can cancel the night ring volume setting.

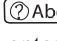


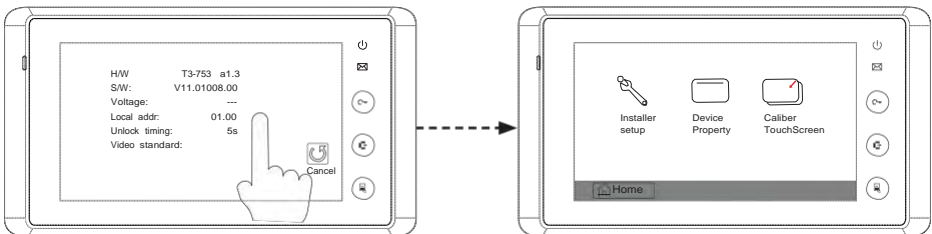
Monitor Time Setting


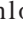


- Enter main menu page, then Touch  **Manual Monitor** icon to enter next page. then press  **Monitor Time** icon to enter monitor time setting page.
- Input digitals by pressing the digital keypad, and press * icon to change the setting location, and press # icon to save. Settings will be performed immediately, press  icon to return last page .

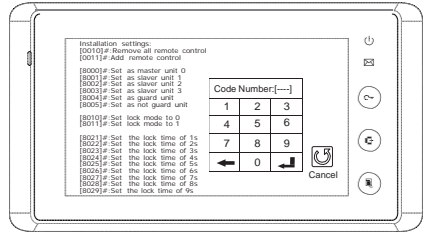


Unlock Parameter Setting





- Enter main menu page, then Touch  **About** icon to enter next page. and then touch the screen anywhere and hold for 3s to enter next menu.

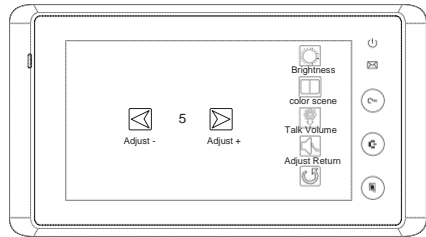


- Touch  **Installer setup** icon,a digital keypad and installation setting will be showed on screen.
- Input code number by touching the digital keypad.According to the left instructions, 8010 and 8011 are used to set the unlock mode(0 and 1). 8021~8029 are used to set the unlock time (1s~9s) .use  to cancel the input,and use  to save the setting. Touch  icon to return last page .





Screen Setting

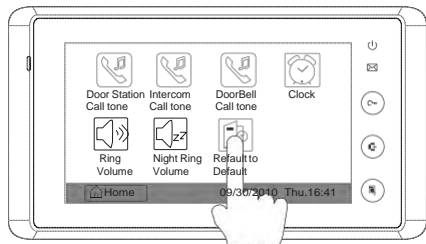
When the Monitor is in monitoring or talking state, Press  **Adjust** icon to enter screen setting page.Touch any item you want,then touch   to decrease or increase the value.Settings will be performed immediately. Press  icon to exit out the page.



Restore to Default

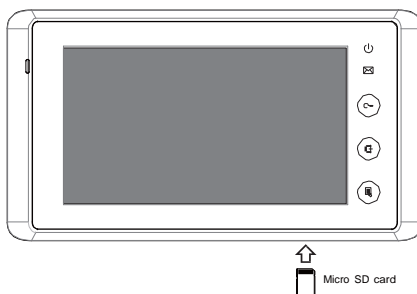
The restore to default function allows the user to recover the settings to factory setting.Note that the restore to default operation will not change the time setting and the datas on built-in memory or SD card.

Enter main menu page,then touch  **User Setup** icon to enter the setting page,press Restore to default item, the default settings will be loaded. press  **Home** icon to return to home screen page.




5. Built-in Memory and SD Card

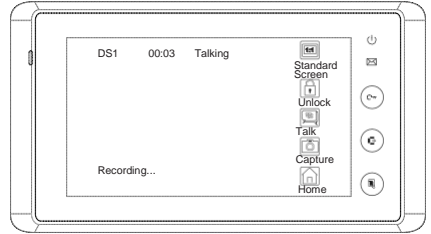
This Monitor has been equipped with a built-in memory (about 120 MB) together with a SD card reader. Maximum 16 GB SD card can be supported.



- The monitor can play photos and pictures.
- Photo frame function, each photo playing will last 5 seconds, More pictures in the SD card, longer time for triggering the function, 800 pictures is supported in inner memory. With 2G SD card,more than 30000 pictures can be supported.
- Must use T-views album software tool to transform the JPG format photos took by digital camera to TVS format photos that can be viewed on Monitor.
- The captured pictures will be saved in a folder named by date,note that the pictures recording every day will be saved in different folders which automatically generated every day.
- The captured pictures in the built-in memory can be copied to the SD card, and you should use T-views memo software tool to convert the pictures to JPG format that can be seen on the computer. (select the pictures(press Ctrl+A to select all)->>click the right key of the mouse ->>choose transfer selected to JPG item->>save the pictures on computer)
- When the built-in memory is full,the oldest picture will be deleted to make room for new record .
- The built-in memory can be formatted by the Monitor,but SD card cannot,you should format the SD card on computer.
- Avoid to plug in/out the SD card when the monitor is under operation.
- Playing will be interrupted by the calling from outdoor station.




Picture Recording

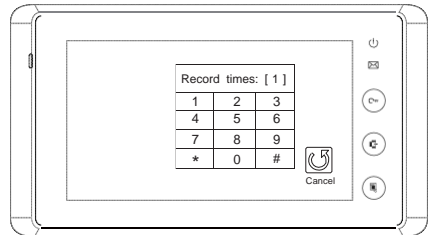
Both Auto-Recording and Manual-Recording are available, and Auto-Recording is default. If receive a Call, after 3s, the monitor will record automatically. or you can touch  **Capture** icon to record the visitor's image manually.












Record times Setting

You can setup Memo Options to choose 1/4/8 pictures memo. If 4/8 was chosen, you will have 4/8 shots for each recording operation, and every 1.5 seconds catch a picture.

Touch  **Multi Media** icon on main menu to enter next page, then touch  **Memory Options** icon, a digital keypad will be showed on the screen, you can only set the record times for 1/4/8 by touching the digital keypad. touching other digitals are unvalid. and press # icon to save. Settings will be performed immediately, press  icon to return last page.



Picture Playback

Touch  **Memory Playback** icon on main menu, 4 pictures will be displayed in the memo for each page. you can touch  or  to enter last or next picture memo, or touch  icon to delete all pictures. And you can zoom the picture on full screen by touch  icon, on full screen mode, touch   icon to preview last/next picture. or you can touch  icon to delete the picture you are previewing. press  icon to return home screen page.

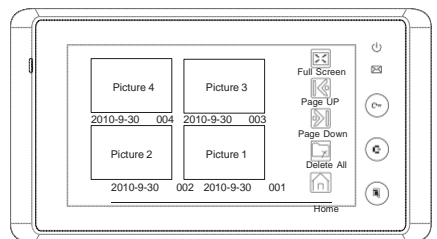






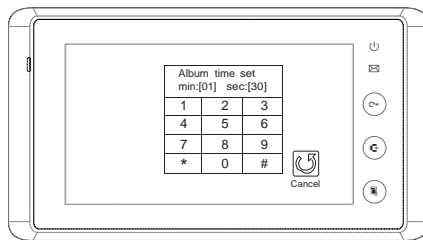
Photo Frame

Photo Playing

Touch  **Album** icon on main menu to play the photos(must plug in SD card).it can be played both manually and automatically,use your fingers to slide right or left on screen to play last/next photo.

Playing time setting

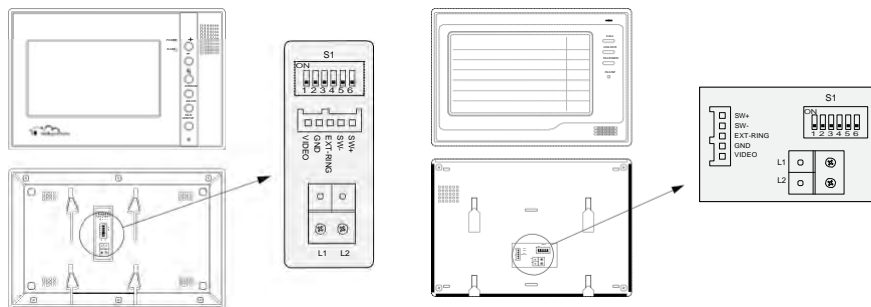
Touch  **Multi Media** icon on main menu to enter next page, then touch  **Album Options** icon,a digital keypad will be showed on the screen,then you can set the playing time by touching the digital keypad to input digitals and press * icon to change the location,and press # icon to save. Settings will be performed immediately, press  icon to return last page .



6.Specification

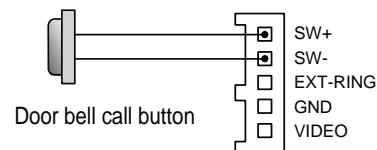
Power Supply :	DC 24V (supplied by Adaptor)
Power Consumption:	Standby 15mA; Working status 400mA
Monitor Screen:	7 Inch color TFT-LCD
Display Resolution:	800*3(RGB)*480 pixels
Built-in Memory:	120 MB
Picture Memo:	800pcs(inner memory),>30000pcs(2G SD card)
Monitor Dimension:	125(H)×225(W)×23(D)mm

Additional Monitor Connections



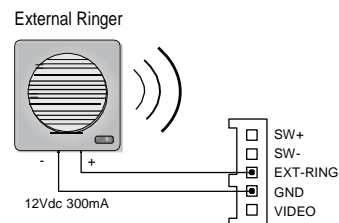
1. Door Bell Call Button

Additional door bell call button can be connected to the Monitor, so that the visitors can ring the door bell again in front of the user's apartment. When the call button is pressed, the Monitor will output ring tones but the screen will keep off, and the external ringer will ring at the same time (if an external ringer is installed).



2. External Ringer

External ringer can be connected to the Monitor. The ringer will ring whenever the Door Station call button or the door bell call button is pressed, and it will stop ringing when the Monitor rejects or answers the call.



3. TV-out function

Connect television to the Monitor, when the Door Station calls, the user switch the channel to the AV channel, and the visitor's video will show up on the screen of the television. The core of the video cable must connect to the VD terminal, and the shielded layer connect to the GND.

