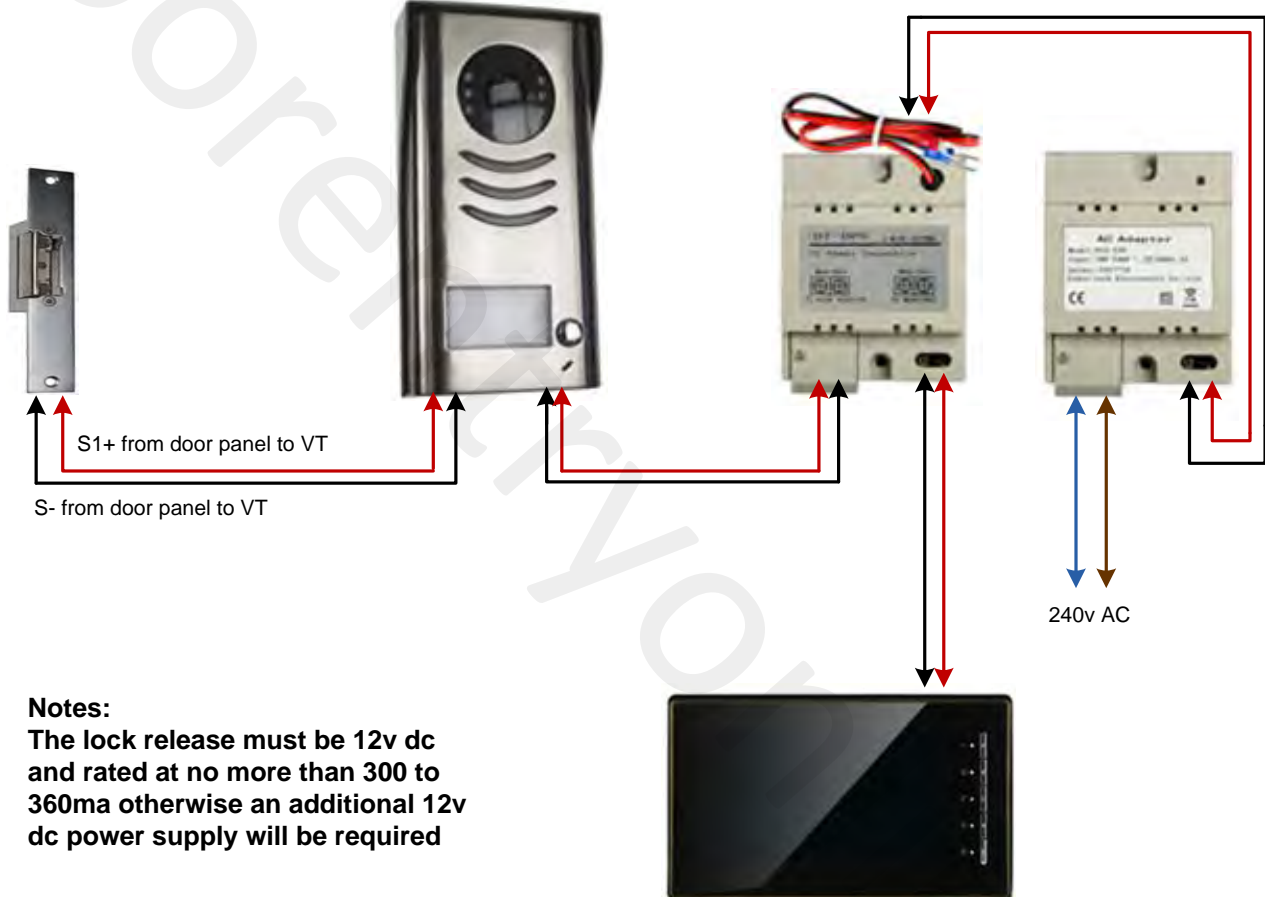
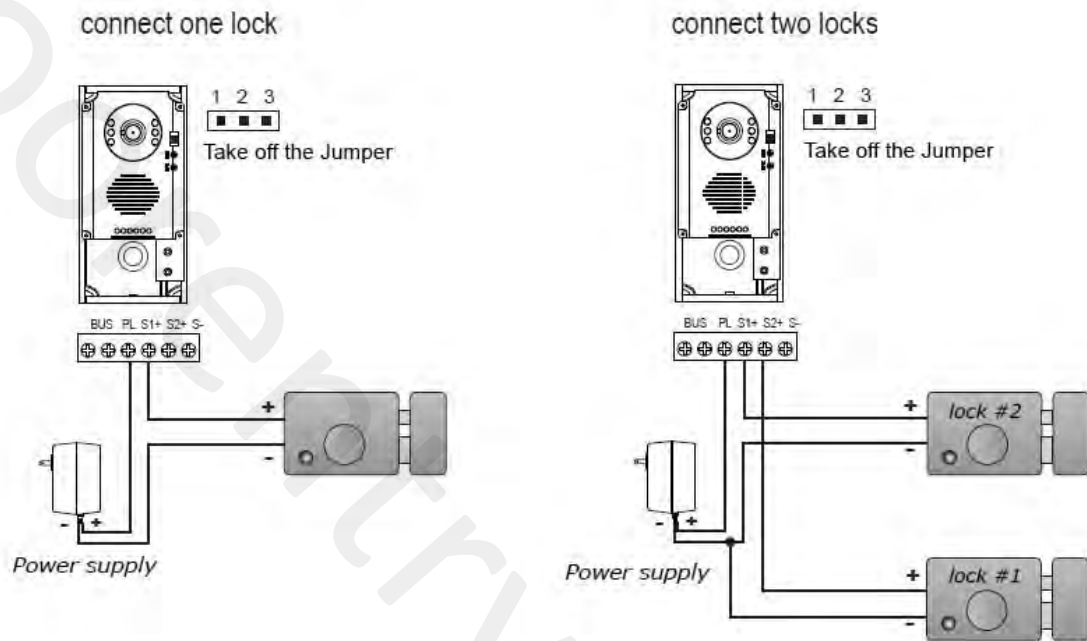


Connecting to a standard 12v dc 360ma lock release



Connecting to a standard 12v dc 360ma+ lock release with additional 12v dc power supply



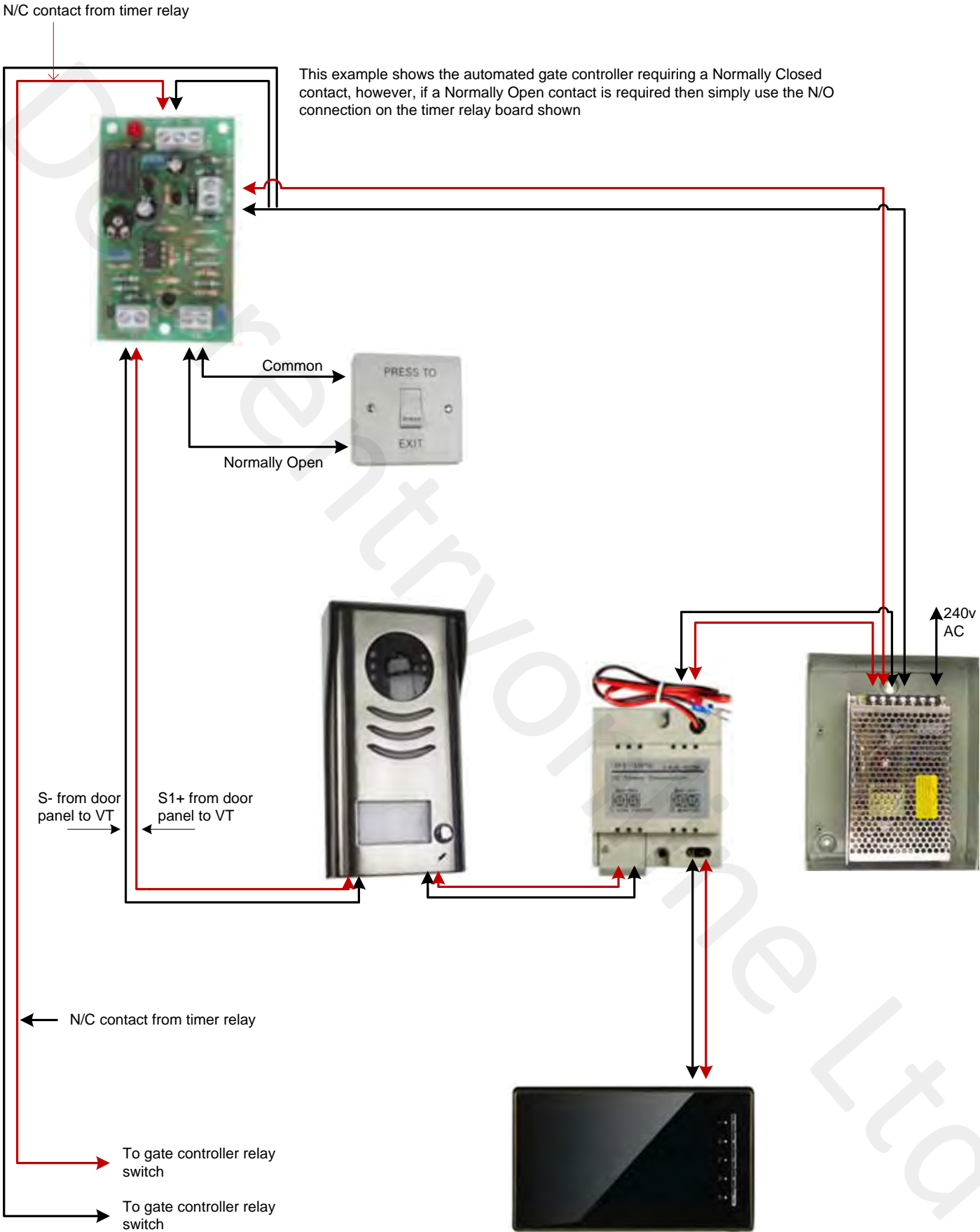
The examples above are for 12v dc fail secure (Power to un-lock) lock releases rated at more than 360ma with a separate 12v dc power supply

This will also work for 24v dc fail secure (Power to un-lock) lock releases using a 24v dc power supply

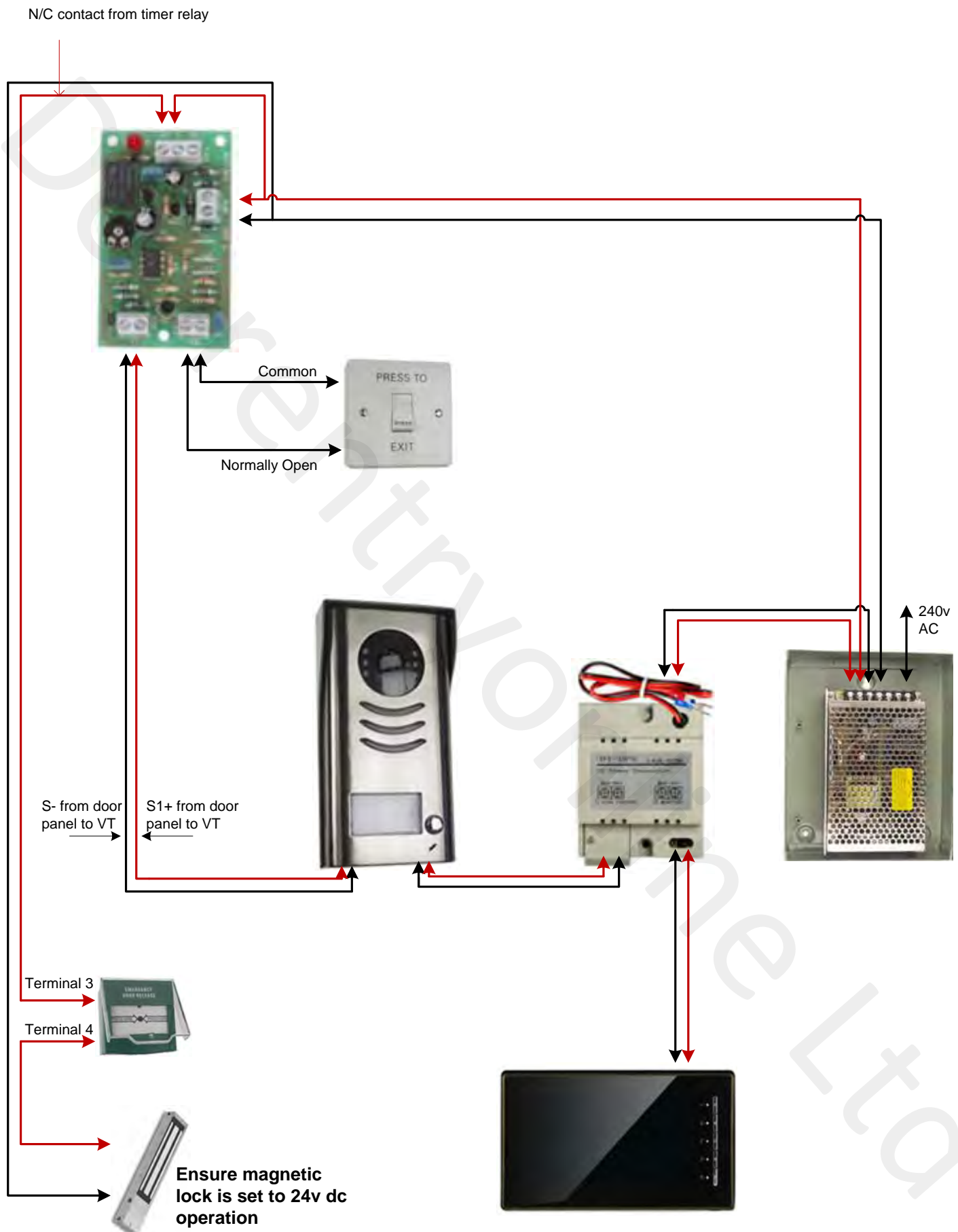
This works for all door panels: 591, 592, 596kp, 596id and DMR

For fail open (Power to lock) lock releases, please ensure you set the main video monitor only for Unlock Mode setting 1

Connecting to an automated gate

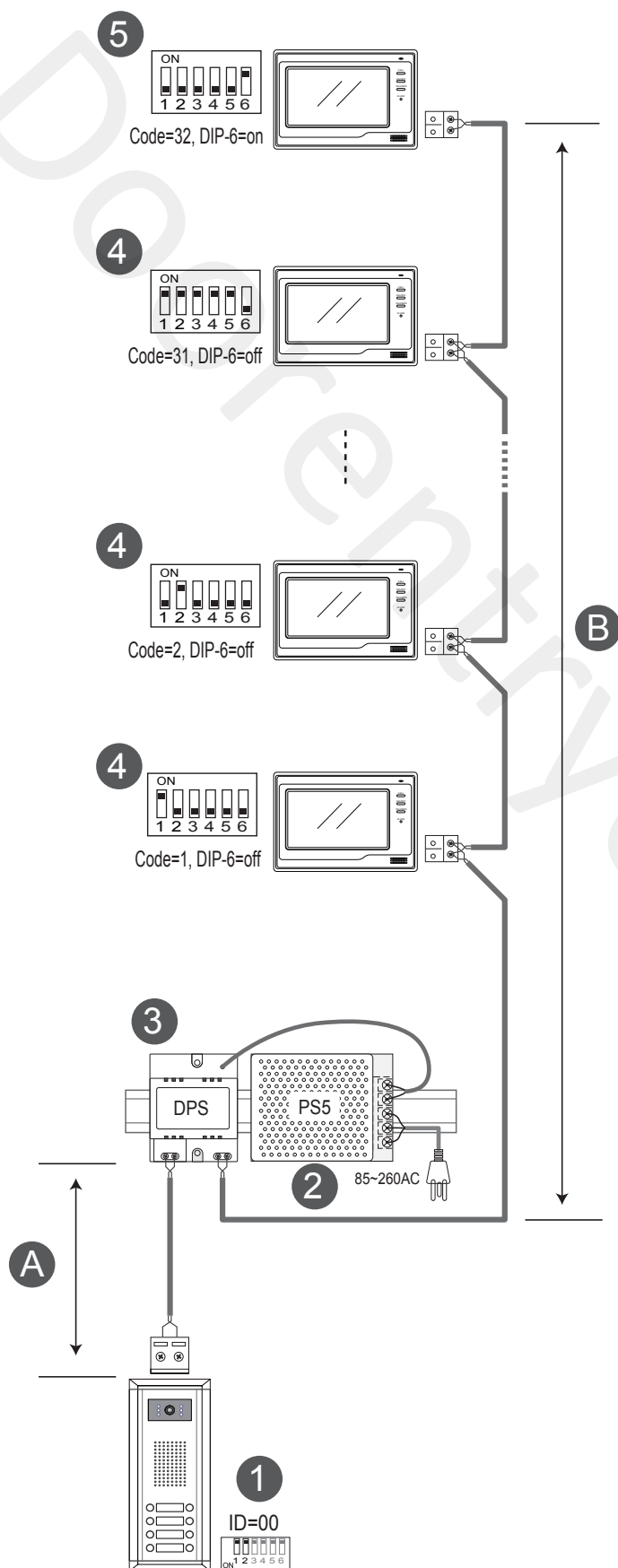


Connecting to a magnetic lock



1. System Wirings and Connections

1.1. IN-OUT wiring without DBC4S distributor

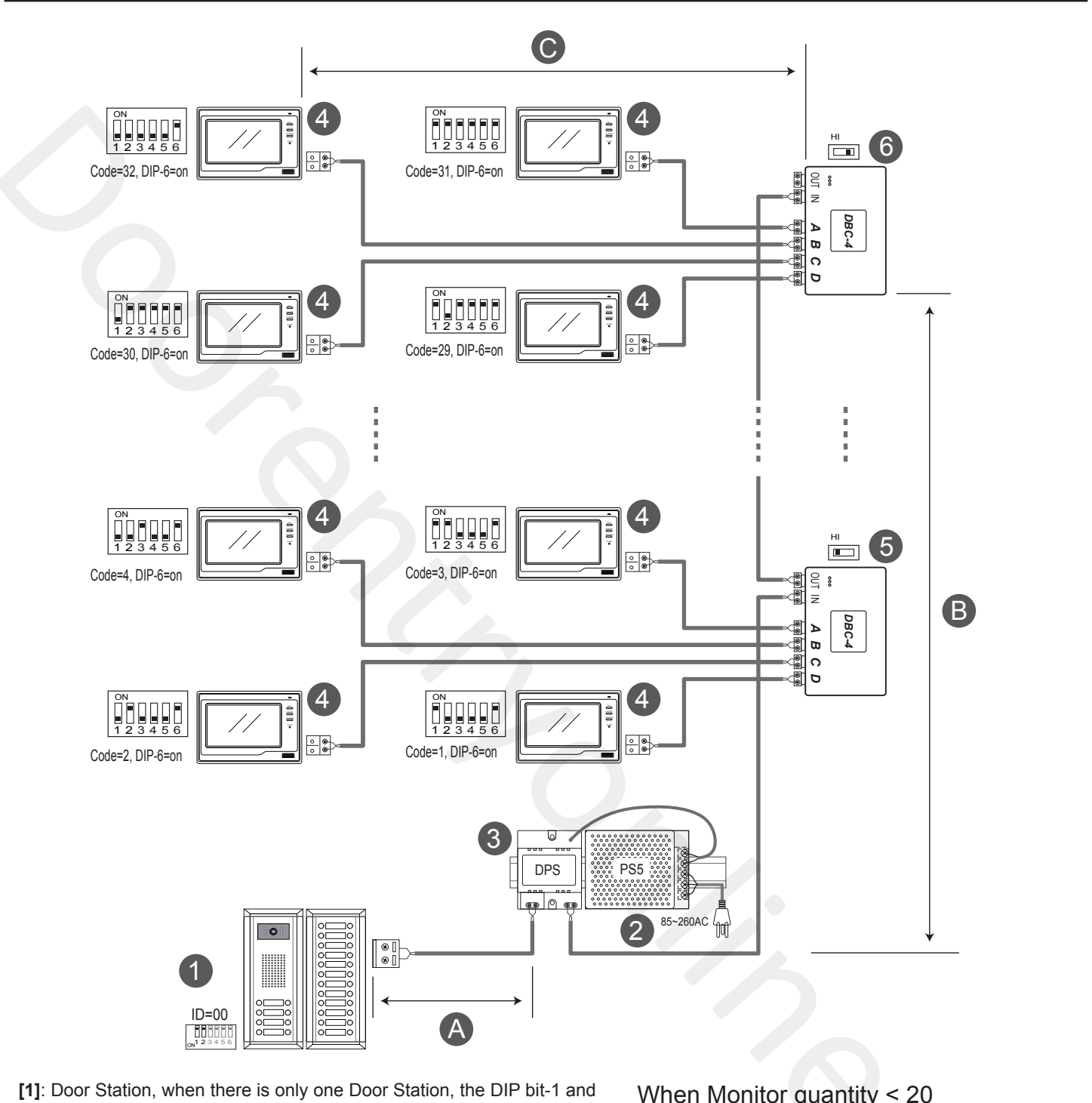


When Monitor quantity < 20

Cable Usage	A	B
Twisted cable 2x0.75 mm ²	60	60
Twisted cable 2x1 mm ²	80	80

When Monitor quantity > 20

Cable Usage	A	B
Twisted cable 2x1 mm ²	70	30
Twisted cable 2x1.5 mm ²	70	50

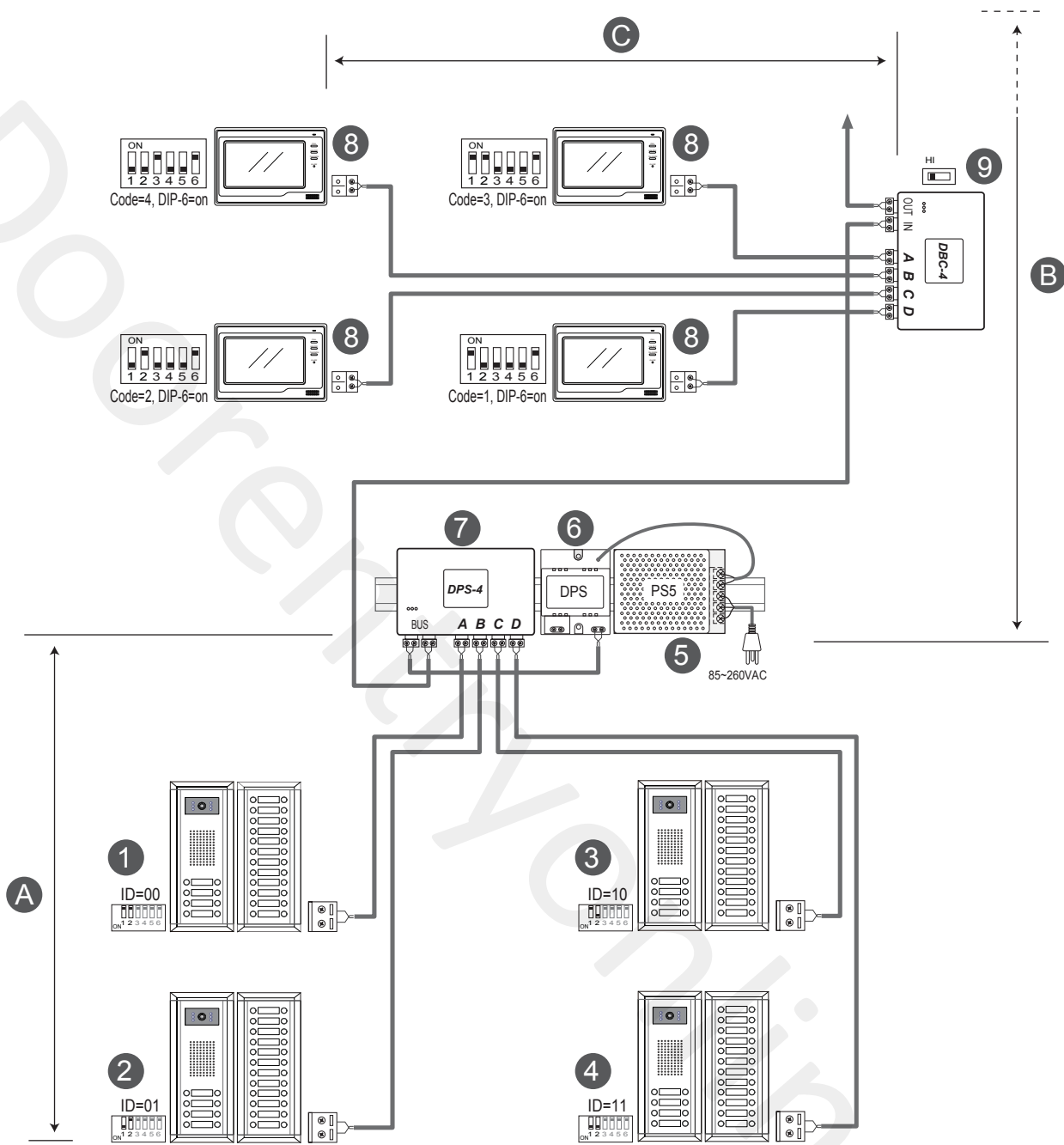


[6]: DBC-4(4 output Branch Controller) unit, the switch of the DBC-4 should be set to 120 as it is at the end of the bus line.

Cable Usage	A	B	C
Twisted cable 2x0.75 mm ²	60	60	30
Twisted cable 2x1 mm ²	80	80	40

Cable Usage	A	B	C
Twisted cable 2x1 mm ²	70	30	20
Twisted cable 2x1.5 mm ²	70	50	30

1.4. Multi Door Station wiring



- [1]: The first Door Station, the DIP bit-1 and bit-2 should be set to 00.
- [2]: The 2nd Door Station, the DIP bit-1 and bit-2 should be set to 01.
- [3]: The 3rd Door Station, the DIP bit-1 and bit-2 should be set to 10.
- [4]: The 4th Door Station, the DIP bit-1 and bit-2 should be set to 11.
- [5]: Power Supply(PS5), MUST be installed side by side with DPS unit.
- [6]: Power Separator, MUST be installed side by side with the PS5 unit.
- [7]: DPS-4(4 input Power Separator), can connect Max. 4 Door Stations.
- [8]: Monitor, each one with a unique User Code, note that all the bit-6 of the DIP should be set to 1 (on) in this case.(Max.32 Monitors)
- [9]: DBC-4(4 output Branch Controller) unit, the switch of the DBC-4 should be set to HI except the last one which is at the end of the bus line.

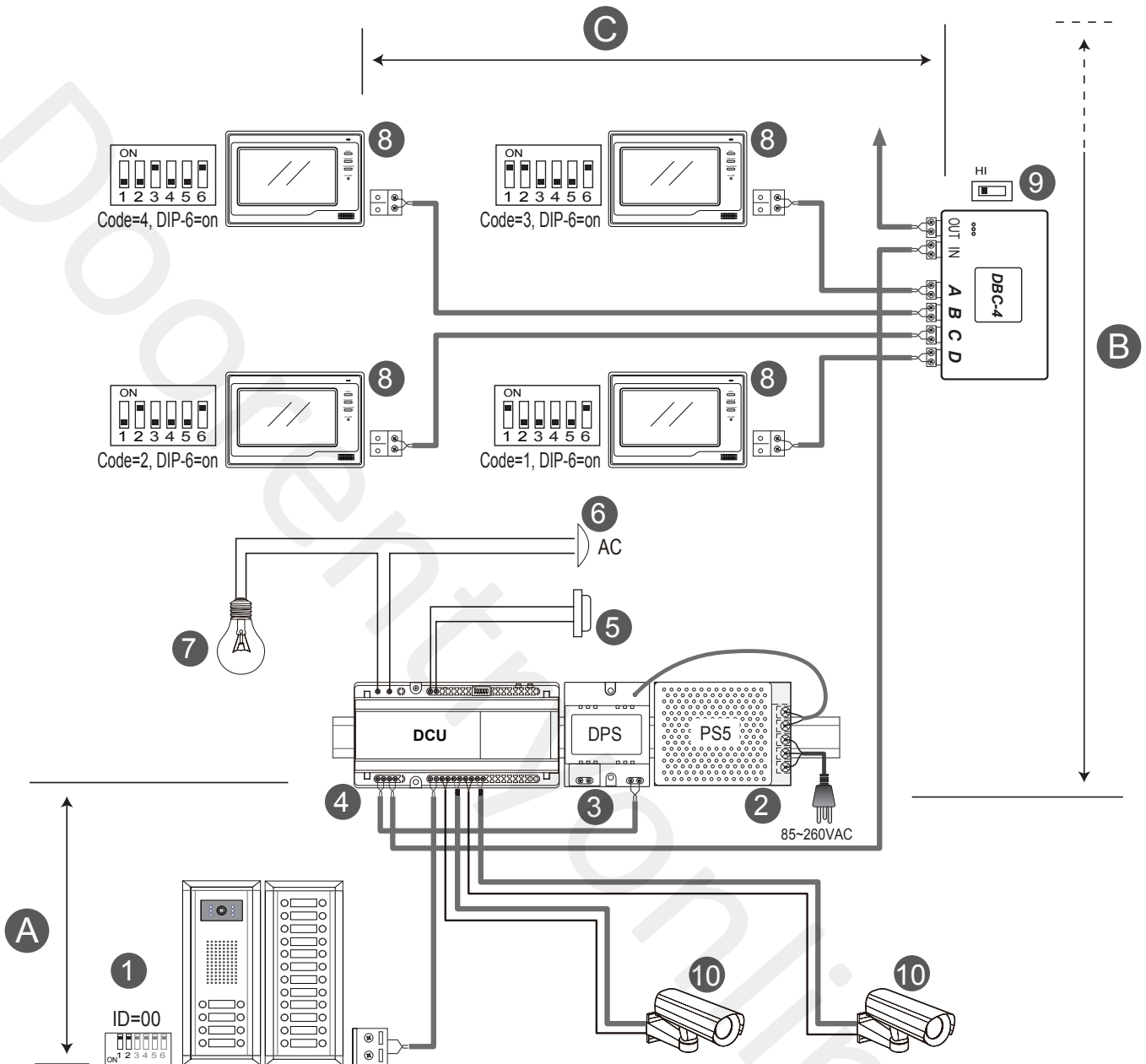
When Monitor quantity < 20

Cable Usage	A	B	C
Twisted cable 2x0.75 mm ²	60	60	30
Twisted cable 2x1 mm ²	80	80	40

When Monitor quantity > 20

Cable Usage	A	B	C
Twisted cable 2x1 mm ²	70	30	20
Twisted cable 2x1.5 mm ²	70	50	30

1.5. CCTV wiring with DCU



[1]: The first Door Station, the DIP bit-1 and bit-2 should be set to 00.

[2]: Power Supply(PS5), MUST be installed side by side with DPS unit.

[3]: Power Separator, MUST be installed side by side with the PS5 unit.

[4]: DCU(CCTV Controller), can connect Max.2 CCTV cameras and lamp/lock at the same time.

[5]: Light turn on button.

[6]: AC input for the lamp.

[7]: Lamp.

[8]: Monitor, each one with a unique User Code, note that all the bit-6 of the DIP should be set to 1 (on) in this case.(Max.32 Monitors)

[9]: DBC-4(4 output Branch Controller) unit, the switch of the DBC-4 should be set to HI except the last one which is at the end of the bus line.

[10]: CCTV camera.

When Monitor quantity < 20

Cable Usage	A	B	C
Twisted cable 2x0.75 mm ²	60	60	30
Twisted cable 2x1 mm ²	80	80	40

When Monitor quantity > 20

Cable Usage	A	B	C
Twisted cable 2x1 mm ²	70	30	20
Twisted cable 2x1.5 mm ²	70	50	30